



# **Municipal Administration Department**

**AP MUNICIPAL SCHOOLS**

**10<sup>th</sup> Class  
Model Question paper  
Booklet**

# INDEX

NAME OF THE SUBJECT	MODEL PAPER NO.	PAGE NO.
<b>TELUGU</b>	MODEL PAPER-I	1-6
	MODEL PAPER-II	7-12
<b>HINDI</b>	MODEL PAPER-I	13-16
	MODEL PAPER-II	17-20
<b>ENGLISH</b>	MODEL PAPER-I	21-30
	MODEL PAPER-II	31-40
<b>MATHEMATICS</b>	MODEL PAPER-I	41-44
	MODEL PAPER-II	45-48
<b>PHYSICAL SCIENCE</b>	MODEL PAPER-I	49-52
	MODEL PAPER-II	53-56
<b>BIOLOGICAL SCIENCE</b>	MODEL PAPER-I	57-62
	MODEL PAPER-II	63-68
<b>SOCIAL STUDIES</b>	MODEL PAPER-I	69-78
	MODEL PAPER-II	79-88

*“Education is the most powerful weapon  
which you can use to change the world.”*

**- Nelson Mandela**

*“Live as if you were to die tomorrow.  
Learn as if you were to live forever.”*

**- Mahatma Gandhi**

**MUNICIPAL SCHOOLS**

GOVT.OF ANDHRA PRADESH

**TELUGU****CLASS-X****Max. Marks: 100****Time : 03.15 hr.**

సూచనలు :

1. ప్రశ్న పత్రంలో మూడు విభాగాలు వుంటాయి.
2. ప్రశ్న పత్రం చదువుకోవడానికి 15 నిమిషాలు రాయడానికి 3.గం.,సమయం వుంటుంది.
3. ప్రశ్నలన్నింటికీ జవాబులు సమాధాన పత్రంలోనే రాయాలి.

**విభాగము-1****I. అవగాహన-ప్రతిస్పందన: (32 మార్కులు)**

1. ఈ క్రింది పద్యాలలో ఒక దానికి ప్రతి పదార్థం వ్రాయండి. 1×8=8 మా.

శివరాజంతట మేల్ముసుంగు దెరలో - స్నిగ్ధాంబుదద్పాయలో  
నవసాదామిని బోలు నా యవనకాంతారత్నమున్ భక్తి గా  
రవముల్ వారగ జూచి వల్కె "వనితారత్నంబు లీ భవ్యహైం  
దవ ( భూజంగమ పుణ్యదేవతలు; మాతా! సైరింపుమీ తప్పు !"

(లేదా)

వేదపురాణశాస్త్ర పదవి నదవీయసియైన పెద్దము  
తైదున కాశికానగర హోటకపీఠ శిఖాధిరూఢ య  
య్యాదను శక్తి సంయమివరా! యిటురమ్మని పిల్చెహస్త సం  
జ్ఞాదరలీల రత్నఖచితాభరణంబులు ఘల్లు ఘల్లువన్

2. క్రింది పద్యాలలో ఒకదానిని పాదభంగం లేకుండా పూరించి,భావం రాయండి 1× 8 = 8 మా.

నీరము తప్తలోహమున నిల్చి ..... గొల్చువారికిన్ ! .

(లేదా)

తన చూపంభుది మీద జూచి..... గుప్పించి లంఘించుచోవన్

3. రామాయణంలోని ఒక కాండ నుండి ఇచ్చిన క్రింది సంఘటనలను వరుస క్రమంలో రాయండి

4 × 2 = 8 మా.

అ.రామలక్ష్మణ సహితుడయి విశ్వామిత్రుడు 'సిద్ధాశ్రమం' చేరుకున్నాడు.

ఆ.చైత్రశుద్ధనవమినాడు కౌసల్యకు శ్రీరాముడు జన్మించాడు.

ఇ.దశరథమహారాజుకు వర్తమానం పంపాడు జనకుడు.

ఈ.నారదుని మాటలు ఇంకా వాల్మీకి చెవిలో ఇల్లు కట్టుకుని పోరుతున్నాయి.

4. క్రింది అపరిచిత గద్యం చదివి, ఇచ్చిన ప్రశ్నలకు జవాబులు వ్రాయండి.. 4 × 2 = 8 మా.

భారతదేశపు సాహితీ పురస్కారాల్లో జ్ఞానపీఠ పురస్కారం అత్యున్నతమైంది .ద .టైమ్స్ ఆఫ్  
ఇండియా వార్తా పత్రిక వ్యవస్థాపకులైన సాహు జైన్ కుటుంబం ఏర్పాటు  
చేసారు.. వాగ్దేవి కాంస్య ప్రతిమ, పురస్కార పత్రం, పదకొండు లక్షల రూపాయల నగదు ఈ  
పురస్కారంలో భాగం గా ఇస్తారు. 1964లో నెలకొల్పబడిన ఈ పురస్కారం మొదటిసారిగా  
1965లో మలయాళ రచయిత జి శంకర కురుప్ కు వచ్చింది. భారతీయ .అధికార భాషలలో  
దేనిలోనైనా రాసే భారత పౌరులు ఈ బహుమతికి అర్హులు.తెలుగు సాహిత్యంలో మొదటిసారిగా  
విశ్వనాథ సత్యనారాయణ, తర్వాత డా.,సి. నారాయణ రెడ్డి,రావూరి భరద్వాజలు ఇప్పటివరకు ఈ  
పురస్కారాన్ని అందుకున్నారు.

ప్రశ్నలు.1. సాహితీ పురస్కారాల్లో అత్యున్నత పురస్కారం ఏది?

2. తెలుగు సాహిత్యంలో మొదటిసారిగా జ్ఞానపీఠ పురస్కారం అందుకున్నది ఎవరు?

3. జ్ఞానపీఠ పురస్కారం మొదటగా ఏ భాషా రచయితకు వచ్చింది?

4. పై గద్యభాగం ఆధారంగా ఒక ప్రశ్న తయారు చేయండి.



విభాగము-2

## II. వ్యక్తీకరణ - సృజనాత్మకత : ( 36 మార్కులు )

ఈ క్రింది ప్రశ్నలకు నాలుగైదు వాక్యాలలో సమాధానాలు రాయండి.

3 × 4 = 12 మా

5. మాణిక్య వీణ పాఠ్య భాగ కవి గురించి రాయండి.

6. లేఖా ప్రక్రియను వివరించండి.

7. త్రిజట పాత్ర స్వభావాన్ని రాయండి.

ఈ క్రింది ప్రశ్నలకు 8 లేక 10 వాక్యాలలో సమాధానాలు రాయండి.

3 × 8 = 24 మా

8. "పల్లెటూళ్ళు ప్రశాంత జీవిత సౌఖ్యానికి పుట్టిల్లు" దీన్ని సమర్థిస్తూ సమాధానం రాయండి.

(లేదా)

గోరంతదీపం' కథానిక ద్వారా వృద్ధుడు, ప్రయోజకుడైన యువకుని మధ్య ఉన్న అనుబంధం

ఎలాంటిదో విశ్లేషిస్తూ సొంతమాటల్లో వివరించండి.

9. సీతాపహరణం గురించి రాయండి.

(లేదా)

రామాయణ ప్రాశస్త్యమును గురించి రాయండి.

10. మహిళల పట్ల చూపుతున్న వివక్షలను, వారి మీద జరుగుతున్న దాడులను ఖండిస్తూ,

మహిళలందరు ధైర్యంతో మెలగాలని తెలియ జేస్తూ కరపత్రం తయారు చేయండి.

(లేదా)

చూడాకర్ణునికి, వీణాకర్ణునికి మధ్య జరిగిన మాటలను సంభాషణా రూపంలో రాయండి.

విభాగము-III

## III. భాషాంశాలు:

(32 మార్కులు)

11. శ్రీమంత్ చొక్కా తెల్లగా మల్లెపువ్వు లా వుంది. ఈ వాక్యంలోని అలంకారాన్ని గుర్తించి, రాయండి.

2 మా

12. ఈ క్రింది పద్యపాదానికి గురులఘువులు గుర్తించి, గణవిభజన చేసి, ఏ పద్యపాదమో గుర్తించి

రాయండి. ఉరుగుణవంతుఁ దొడ్లు తన కొండపకారము చేయునపుడుం

2 మా

ఈ క్రింది ప్రశ్నలకు సూచించిన విధంగా జవాబులను రాయండి.

13. అ. ప్రభుత్వం పేదలకు ఉచిత వాసము కోసం ఎంతో ఖర్చు చేస్తున్నది. గీత ఉన్న పదానికి సరైన అర్థాన్ని రాయండి.

1 మా

ఆ. స్త్రీలకు సూడిగములు ఎంతో అందాన్నిస్తాయి. గీత ఉన్న పదానికి సరైన అర్థాన్ని గుర్తించి రాయండి.

1 మా

1) నగలు                      2) గాజులు                      3) చీరలు                      4) మెట్టలు

14. అ) శివుడు తాండవం చేస్తున్నాడు. గీత ఉన్న పదానికి పర్యాయ పదాలను రాయండి.

1 మా

ఆ) వివరము లోకి పాము వెళ్ళింది. గీత ఉన్న పదానికి సరైన పర్యాయ పదాలను గుర్తించి రాయండి.

1 మా

1) ఇల్లు ,పుట్ట                      2) కలుగు, రంద్రం                      3) పాము ,పుట్ట                      4) చెట్టు , కొమ్మ

15 అ) ఎప్పటి కార్యము అప్పుడే పూర్తిచేయాలి . గీత ఉన్న పదానికి వికృతి పదం రాయండి. 1మా

ఆ) దక్షిణ దీశ యముని స్థానం. గీత ఉన్న పదానికి వికృతి పదం గుర్తించి రాయండి. 1మా

1) దసే                      2) దేశ                      3) దిస                      4) దెస

- 16 అ ) విద్వే వల్ల వినయం అలవడుతుంది. గీత ఉన్న పదానికి ప్రకృతి పదం రాయండి. 1 మా
- అ) సింహము గొబ్బలో ఉన్నది. గీత ఉన్న పదానికి ప్రకృతి పదం గుర్తించి రాయండి. 1 మా
- 1) గూబ 2) గృహ 3) గుహ 4) గూము
- 17 పుస్తకాలు చదివితే విజ్ఞానము వస్తుంది. గీత ఉన్న పదాన్ని విడదీసి రాయండి. 1మా
18. మా పల్లె + ఊరు అందమైనది. గీత ఉన్న పదాన్ని కలిపి రాయండి. 1మా
19. కృష్ణుడు అర్జునుడికి మహాపకారం చేశాడు. గీత ఉన్న పదం లోని సంధిని గుర్తించి, రాయండి. 1మా
- 1) గుణసంధి 2) సవర్ణదీర్ఘ సంధి 3) అత్వసంధి 4) ఉత్వ సంధి
- 20 మానవచరిత్రలో ఎన్నో ముఖ్యమైన సంఘటనలు వున్నాయి. గీత ఉన్న పదం ఏ సమాసమో రాయండి. 1 మా
21. మృదుమధురము గీత ఉన్న పదానికి విగ్రహవాక్యాన్ని రాయండి. 1మా
22. ద్వంద్వ సమాసానికి ఉదాహరణను గుర్తించి రాయండి . 1 మా
- 1) సప్త సముద్రాలు 2) రేపగలు 3) క్రొత్త తోపు 4) జానపదుని జాబు

**కింది జాతీయాలకు సూచించిన విధంగా జవాబులు రాయండి.**

23. మా తల్లి మాటే మాకు సుగ్రీవాజ్ఞ . ఈ వాక్యంలోని జాతీయాన్ని గుర్తించి, రాయండి. 2 మా
24. నిమ్మకు నీరెత్తడం ఈ జాతీయాన్ని ఉపయోగించి సొంత వాక్యం రాయండి. 2 మా
25. పురిటిలోనే సంధి కొట్టడం ”. అనే ఈ జాతీయాన్ని ఏ సందర్భంలో ఉపయోగిస్తారో రాయండి. 2 మా

**కింది ప్రశ్నలకు సూచించిన విధంగా జవాబులు రాయండి.**

26. అన్యత మాడుట కంటే మౌనము మేలు - ఈ వాక్యానికి సరైన ఆధునిక వచనాన్ని గుర్తించండి. 1 మా
- 1 ) అబద్ధమాడుట కంటే మౌనంగా ఉండుట మేలు .
- 2) అబద్ధ మాడుట కంటే మౌనంగా ఉండుట మేలు కాదు.
- 3 ) అబద్ధ మాడుట కంటే మాట్లాడం మేలు.
- 4) అబద్ధ మాడకుండా మౌనంగా ఉండుట మేలా?

27. హనుమంతుడు సీతను చూశాడు .. ఈ వాక్యాన్ని వ్యతిరేకార్థక వాక్యంలోకి మార్చి రాయండి. 1 మా

28. ఈ క్రింది పదాల్లో వ్యతిరేకార్థక క్రియను గుర్తించి రాయండి. 1 మా

- 1) రాయక                      2) ఆడి                      3 ) పోయి                      4) వస్తూ

29 చిత్రగ్రీవం చీమను చంపింది. ఈ కర్తరి వాక్యాన్ని కర్మణివాక్యంగా మార్చి రాయండి. 1 మా

30. హనుమంతుడు సముద్రాన్ని లంఘించాడు. ఈ కర్తరి వాక్యం కర్మణి వాక్యంగా మార్చినపుడు ఇలా ఉంటుంది. 1 మా

హనుమంతుని చే సముద్రం..... ( ఈ ఖాళీని పూరించి వాక్యం విడిగా రాయండి.)

31. ఆ సంపద ఎన్నాళ్ళు ఉంటుంది ? ఇది ఏ రకం వాక్యమో గుర్తించి రాయండి. 1మా

- 1 ) ప్రశ్నార్థక వాక్యం    2 ) విధ్యర్థక వాక్యం    3 )    హేత్వర్థక వాక్యం.    4) ఏది కాదు

32. ఆహా! ఎంత అద్భుతంగా వుంది! ఇది ఏ రకమైన వాక్యమో గుర్తించి రాయండి. 1 మా

33. మాస్క్ లేకుంటే లోనికి రావద్దు. ఇది ఏ రకమైన వాక్యమో క్రింది వానిలో సరైన జవాబు గుర్తించి రాయండి. 1 మా

- 1) ఆశ్చర్యార్థక వాక్యం                      2) నిషేధా ర్థక వాక్యం  
3) సంభావనార్థక వాక్యం                      4) అనుమత్యర్థక వాక్యం.

**\* \* \* \* ALL THE BEST \* \* \* \***

**MUNICIPAL SCHOOLS**

GOVT.OF ANDHRA PRADESH

**TELUGU****CLASS-X****Max. Marks: 100****Time : 03.15 hr.**

సూచనలు :

1. ప్రశ్న పత్రంలో మూడు విభాగాలు వుంటాయి.
2. ప్రశ్న పత్రం చదువుకోవడానికి 15 నిమిషాలు రాయడానికి 3.గం.,సమయం వుంటుంది.
3. ప్రశ్నలన్నింటికీ జవాబులు సమాధాన పత్రంలోనే రాయాలి.

**విభాగము-1****I. అవగాహన-ప్రతిస్పందన: (32 మార్కులు)**

1. ఈ క్రింది పద్యాలలో ఒక దానికి ప్రతి పదార్థం వ్రాయండి.

**1×8=8 మా.**

నీరము తప్తలోహమున నిల్చి యనామకమై నశించు నా  
నీరమె ముత్యమట్లు నళినీదళ సంస్థితమై తనర్చునా  
నీరమె శుక్తిలోఁబడి మణిత్యము గాంచు సమంచిత ప్రభన్  
బొరుష వృత్తులి టధము మధ్యము నుత్తము గొల్చువారికిన్.

(లేదా)

తన చూ పంబుధిమీఁదఁ జూచి శ్రవణద్వంద్వంబు రిక్కించి వం  
చిన చంచద్భుజముల్ సముత్కటకటినీ మంబులన్ బూన్చి తోఁ  
క నబోవీధికిఁ బెంచి యంపు లిజీయంగాఁ బెట్టి చిట్టూది గ్ర  
క్కున నర్కొంద యడంగండ్రిక్కి పయికిం గుప్పించి లంఘించుచోన్

2. క్రింది పద్యాలలో ఒకదానిని పాదభంగం లేకుండా పూరించి, భావం రాయండి **1×8=8 మా.**

ఆ యేమీ! యొక రాణివాసమున్..... బెద్దత్యమోర్వన్ జూమీ ! .

(లేదా)

ఆకంఠంబుగ నిప్పు..... శిలోంధప్రకముల్ తాపసుల్!

3. రామాయణంలోని క్రింది సంఘటనలను వరుస క్రమంలో రాయండి **4 × 2 = 8 మా.**

- అ. కైకేయి స్వయంగా తెచ్చి ఇచ్చిన నారాచీరలను సీతారామలక్ష్మణులు ధరించారు.
- ఆ. భరతుని అభ్యర్థన మేరకు శ్రీరాముడు పాదుకలను అనుగ్రహించాడు.
- ఇ. శ్రీరామున్ని తోడ్కొని రావాల్సిందిగా కైకేయి సుమంతుణ్ణి ఆజ్ఞాపించింది.
- ఈ. మంధరను చంపడానికి ఉద్యుక్తుడైన శత్రుఘ్నుడు భరతుని మాట విని విరమించుకున్నాడు.

4. క్రింది అపరిచిత గద్యం చదివి, ఇచ్చిన ప్రశ్నలకు జవాబులు వ్రాయండి..  $4 \times 2 = 8$  మా.

ప్రత్యేక ఆంధ్ర రాష్ట్ర సాధన కొరకు పొట్టి శ్రీరాములు మద్రాసులో 1952 అక్టోబర్ 19న బులుసు సాంబమూర్తి ఇంట్లో నిరాహారదీక్ష ప్రారంభించాడు చాలా మామూలుగా ప్రారంభమైన . దీక్ష, క్రమంగా ప్రజల్లో అలజడి రేపింది ఆంధ్ర కాంగ్రెసు కమిటీ మాత్రం దీక్ష .ను సమర్థించలేదు . ప్రజలు మాత్రం శ్రీరాములుకు మద్దతుగా సమ్మెలు, ప్రదర్శనలు జరిపారు ప్రభుత్వం మాత్రం రాష్ట్రం .

ఏర్పాటు దిశగా విస్ఫుల్ల ప్రకటన చెయ్యలేదు. చివరికి 1952 డిసెంబర్ 15 అర్ధరాత్రి పొట్టి శ్రీరాములు, తన ఆశయసాధనలో ప్రాణాలర్పించి అమరజీవి అయ్యాడు చివరికి .. డిసెంబర్ 19న ప్రత్యేక రాష్ట్రం ఏర్పాటుచేస్తూ ప్రధానమంత్రి జవహర్లాల్ నెహ్రూ ప్రకటన చేసాడు ఆంధ్ర రాష్ట్రం .

ఏర్పడితే ఒక్క రోజు కూడా ఆంధ్రులు మద్రాసులో రాజధాని పెట్టుకోటానికి వీల్లేదని మరునాడే వెళ్ళిపోవాలని చక్రవర్తుల రాజగోపాలాచారి తెగేసి చెప్పాడు . గత్యంతరంలేక కర్నూలు రాజధానిగా 1953 అక్టోబర్ 1న ఆంధ్ర రాష్ట్రం ఏర్పడింది.

.ప్రశ్నలు. 1.దేనికోసం పొట్టి శ్రీరాములు నిరాహార దీక్ష చేశారు??

2.అప్పటి ప్రధాన మంత్రి ఎవరు?

3. ఏ తేదీన ఆంధ్ర రాష్ట్రం ఏర్పడింది?

4.పై గద్యభాగం ఆధారంగా ఒక ప్రశ్న తయారు చేయండి.

### విభాగము-2

II. వ్యక్తికరణ - సృజనాత్మకత : ( 36 మార్కులు )

ఈ క్రింది ప్రశ్నలకు నాలుగైదు వాక్యాలలో సమాధానాలు రాయండి.  $3 \times 4 = 12$  మా

5. సముద్ర లంఘనం పాఠ్య భాగ కవి గురించి రాయండి.

6. కథానిక ప్రక్రియను వివరించండి.

7. మారీచుడు పాత్ర స్వభావాన్ని రాయండి.

ఈ క్రింది ప్రశ్నలకు 8 లేక 10 వాక్యాలలో సమాధానాలు రాయండి.  $3 \times 8 = 24$  మా

8. ధన్యుడు పాఠం ఆధారంగా అర్థనాశం, మనస్తాపం, గృహమందలి దుశ్చరితం, వంచనం, పరాభవం' - ఈ పదాల గురించి మీరు ఏరకంగా అర్థం చేసుకున్నారో సోదాహరణంగా రాయండి.

(లేదా)

శిశువుల పెంపకంలో పక్షులకు, మానవులకు మధ్య ఉన్న సామ్యాలను రాయండి.

9. సీతాన్వేషణ వృత్తాంతం గురించి రాయండి.

(లేదా)

శ్రీరామ సుగ్రీవుల మైత్రి గురించి రాయండి.

10. మీరు చూసిన పల్లెటూరులోని మనుష్యుల మధ్య సంబంధాలు అక్కడి ప్రకృతి దృశ్యాలను వర్ణిస్తూ మిత్రునికి లేఖ రాయండి.

(లేదా)

ఒక ప్రముఖ స్త్రీవాద రచయిత్రి మీ పాఠశాల వార్షికోత్సవంలో ముఖ్య అతిథిగా పాల్గొనడానికి వస్తున్నారు. వారిని మీరు ఏమి ప్రశ్నించదలచుకున్నారో ఆ ప్రశ్నల జాబితా రాయండి.

### విభాగము-III

III. భాషాంశాలు:

( 32 మార్కులు)

11. రాజు కువలయానంద కరుడు ఈ వాక్యంలోని అలంకారాన్ని గుర్తించి, రాయండి. 2 మా

12. ఈ క్రింది పద్యపాదానికి గురులఘువులు గుర్తించి, గణవిభజన చేసి, ఏ పద్యపాదమో గుర్తించి రాయండి.

పట్టుగ నీశ్వరుండు తన పాలిట నుండిపుడిచ్చినంతలో 2 మా

ఈ క్రింది ప్రశ్నలకు సూచించిన విధంగా జవాబులను రాయండి.

13. అ. రోదసిలోకి మరొక ఉపగ్రహం ప్రవేశపెట్టారు. గీత ఉన్న పదానికి సరైన అర్థాన్ని రాయండి. 1 మా

ఆ. మానవుడు కాడు వీడి నాగరికత బాట పట్టాడు. గీత ఉన్న పదానికి సరైన అర్థాన్ని గుర్తించి రాయండి. 1 మా

1) పట్నం

2) పల్లెలు

3) అడవి

4) భూమి

14. అ) శిరస్సు వంచి గురువు పాదాలకు నమస్కరించాను.. గీత ఉన్న పదానికి పర్యాయ పదాలను

రాయండి.

1 మా

ఆ) నేత్రం అన్ని అవయవాలకంటే సున్నితమైనది.గీత ఉన్న పదానికి సరైన పర్యాయ పదాలను

గుర్తించి రాయండి.

1 మా

1) మనస్సు ,హృదయం

2) ముక్కు ,నాసికం

3) నయనం ,కన్ను

4) తల ,మెదడు

15 అ) ఆ గృహం లోకి పాము వెళ్ళింది. గీత ఉన్న పదానికి వికృతి పదం రాయండి. 1మా

ఆ)ఆహారం లేక ఎలుక కృశించింది. గీత ఉన్న పదానికి వికృతి పదం గుర్తించి రాయండి. 1మా

1) అన్నం

2) తిండి

3) ఓగిరం

4) భోజనం

16 అ ) విద్యార్థి విన్నానం సంపాదించుకోవాలి . గీత ఉన్న పదానికి ప్రకృతి పదం రాయండి 1 మా

ఆ) చట్టము ను జాగ్రత్తగా చదవాలి, గీత ఉన్న పదానికి ప్రకృతి పదం గుర్తించి రాయండి. 1 మా

1) చటం

2) చుట్టం

3) ,శాస్త్రం

4) నియమం

17 విమానం నిట్టనిలువు నా కూలిపోయింది. గీత ఉన్న పదాన్ని విడదీసి రాయండి. 1మా

18. ఆ జగత్ + జనని మొక్కుదాం గీత ఉన్న పదాన్ని కలిపి రాయండి. 1మా

19. చింతాకు పప్పు బాగుంటుంది . గీత ఉన్న పదం లోని సంధిని గుర్తించి, రాయండి. 1మా

1) గుణసంధి

2) సవర్ణదీర్ఘ సంధి

3) అత్వసంధి

4) ఉత్వ సంధి

20 చంపకవతి పట్టణంలో సన్యాసులు జీవించారు, గీత ఉన్న పదం ఏ సమాసమో రాయండి. 1 మా

21. విద్యాధికులు అధికంగా వుంటే సమాజం బాగుంటుంది. గీత ఉన్న పదానికి విగ్రహాన్ని రాయండి.

1మా



22. ద్వీగు సమాసానికి ఉదాహరణను గుర్తించి రాయండి . 1 మా

- 1) సప్త సముద్రాలు      2) రేపగలు      3) క్రొత్త తోపు      4) జానపదుని జాబు

**కింది జాతీయాలకు సూచించిన విధంగా జవాబులు రాయండి.**

23. దుర్మార్గుల కబంధహస్తాలకు చిక్కితే తప్పించుకోలేము ఈ వాక్యంలోని జాతీయాన్ని గుర్తించి, రాయండి. 2 మా

24. "గజ్జెకట్టడం" ఈ జాతీయాన్ని ఉపయోగించి నొంత వాక్యం రాయండి. 2 మా

25. "నీరు కారిపోవడం". అనే ఈ జాతీయాన్ని ఏ సందర్భంలో ఉపయోగిస్తారో రాయండి. 2 మా

**కింది ప్రశ్నలకు సూచించిన విధంగా జవాబులు రాయండి.**

26. వివేకహీనుడయిన ప్రభువును సేవించుట కంటే వనవాసముత్తమము - ఈ వాక్యానికి సరైన ఆధునిక వచనాన్ని గుర్తించండి. 1 మా

- 1) వివేకహీనుడయిన రాజును సేవించుట కంటే వనవాసముత్తమము
- 2) వివేక హీనుడైన ప్రభువును సేవించడం కంటే వనవాసం ఉత్తమం.
- 3) వివేకహీనుడైన ప్రభువును సేవించడము కంటే వనవాసము ఉత్తమమే కదా !
- 4) వివేకహీనుడయిన రాజును సేవించుట కంటే వనవాసము మంచిది.

27 మానవులకు కళలతో అవసరం వుంది . ఈ వాక్యాన్ని వ్యతిరేకార్థక వాక్యంలోకి మార్చి రాయండి. 1 మా

28. ఈ క్రింది పదాల్లో వ్యతిరేకార్థక క్రియను గుర్తించి రాయండి. 1 మా

- 1) వెళ్ళి      2) ఆడి      3 ) వెళ్ళక      4) వస్తూ

29. శివాజీ కళ్యాణి దుగ్గాన్ని జయించాడు. ఈ కర్తరి వాక్యాన్ని కర్మణివాక్యంగా మార్చి రాయండి.

1 మా

30. వాల్మీకి రామాయణాన్ని రచించాడు. ఈ కర్తరి వాక్యం కర్మణి వాక్యంగా మార్చినపుడు ఇలా

ఉంటుంది.

1 మా

వాల్మీకి చే రామాయణం ..... ( ఈ ఖాళీని పూరించి వాక్యం విడిగా రాయండి.)

31. మీరు రావచ్చు . ఇది ఏ రకం వాక్యమో గుర్తించి రాయండి.

1మా

1 ) ప్రశ్నార్థక వాక్యం 2 ) విధ్యర్థక వాక్యం 3 ) అనుమత్యర్థక వాక్యం. 4) ఏది కాదు

32. నేను తప్పక వస్తాను . ఇది ఏ రకమైన వాక్యమో గుర్తించి రాయండి.

1 మా

33. వారందరికీ ఏమైంది? ఇది ఏ రకమైన వాక్యమో క్రింది వానిలో సరైన జవాబు గుర్తించి రాయండి.

1 మా

1) ఆశ్చర్యార్థక వాక్యం

2) నిషేధార్థక వాక్యం

3) ప్రశ్నార్థక వాక్యం

4) అనుమత్యర్థక వాక్యం.

**\* \* \* \* ALL THE BEST \* \* \* \***

# MUNICIPAL SCHOOLS

GOVT. OF ANDHRA PRADESH  
HINDI

Class-X

Max. Marks : 100

Time : 03:15 hr

## भाग-I

I. निम्न लिखित प्रश्नों के उत्तर सूचना के अनुसार लिखिए।

12x1=12

1. पायो जी मैं तो राम रतन धन पायो।

रेखांकित शब्द का तत्सम रूप लिखिए।

रत्न

रतान

नत्ता

2. गोपाल अच्छा गाता है। (क्रिया-विशेषण शब्द पहचानकर लिखिए।)

3. "1948" हिन्दी अक्षरों में लिखिए।

4. हमें दिन ..... नहीं सोना चाहिए।

सही कारक चिह्न पहचानकर लिखिए।

से

में

के

5. बच्चे सुबह-शाम खेलते हैं। (वाक्य पढ़कर सही व्याकरण जोड़ी पहचानिए।)

शाम खेलते हैं। - कर्मधारय समास

सुबह-शाम - द्वंद्व समास

6. संकल्प के द्वारा आदमी सफल बनता है।

रेखांकित शब्द का संधि विच्छेद कीजिए।

7. जिसका अंत न हो - एक शब्द में लिखिए।

8. अभागों को देखकर मेरा दिल कचोट रहा है। (निम्न में से मुहावरे का सही अर्थ पहचानिए।)

1. खुश होना

2. दुःखी होना

9. कवि कविता लिखता है। (लिंग बदलकर वाक्य फिर से लिखिए।)

10. तितली उड़ती है। (वचन बदलकर वाक्य फिर से लिखिए।)

11. लता गाना गाती है। (वाक्य को भविष्यत् काल में लिखिए।)

12. वह उसका गाँव जाता है। (वाक्य को शुद्ध कीजिए।)

13. निम्न लिखित गद्यांश पढ़कर उत्तर अनुच्छेद में से ही पहचानकर लिखिए।

5x1=5

पहाड़ियों के अपने-अपने गीत हैं। उनके अपने-अपने भिन्न रूप होते हुए भी अशास्त्रीय होने के कारण उनमें अपनी एक समान भूमि है। गढ़वाल, किन्नौर, काँगडा आदि के अपने-अपने गीत और उन्हे गाने की अपनी-अपनी विधियाँ हैं। उनका अलग नाम ही पहाड़ी पड़ गया है।

**प्रश्न :**

1. 'पृथ्वी' शब्द का पर्याय शब्द पहचानकर लिखिए।
2. 'शास्त्रीय' का विलोम शब्द पहचानकर लिखिए।
3. 'अ' उपसर्ग से युक्त शब्द पहचानकर लिखिए।
4. 'ई' प्रत्ययवाला शब्द को पहचानकर लिखिए।
5. अनुच्छेद में से एक सर्वनाम शब्द पहचानकर लिखिए।

14. गद्यांश पढ़कर दिए प्रश्नों के उत्तर एक वाक्य में लिखिए।

5x1=5

प्रो. विकास अगली शाम को प्रो. दीपेश के साथ उनके ही बाग में बैठकर प्रतीक्षा कर रहे थे कि शायद वह अंतरिक्षयान दुबारा इस रास्ते से गुजरें। उनका इंतजार करना व्यर्थ नहीं गया। दुबारा वह अंतरिक्षयान उसी रास्ते से गुजरा, लेकिन वह इस बार वापस अंतरिक्ष में नहीं गया। वह बाग में ही उतरा। प्रो. दीपेश और प्रो. विकास आश्चर्यचकित हो उस यान को देख रहे थे। दोनों सोचने लगे कि यह यान यहाँ क्यों उतरा?

**प्रश्न :**

1. प्रो. विकास और प्रो. दीपेश कहाँ बैठकर प्रतीक्षा कर रहे थे?
2. प्रो. विकास और प्रो. दीपेश क्या सोचने लगे?
3. अंतरिक्ष यान कहाँ उतरा?
4. अंतरिक्ष यान किस रास्ते से गुजरा?
5. कौन आश्चर्यचकित हो यान को देख रहे थे?

15. निम्नलिखित पद्यांश पढ़कर दिये गए प्रश्नों के उत्तर विकल्पों में से चुनकर कोष्ठक में लिखिए।

5x1=5

जिसने श्रम-जल दिया उसे  
पीछे मत रह जाने दो,  
विजीत प्रकृति से पहले  
उसको सुख पाने दो।  
जो कुछ न्यस्त प्रकृति में है,  
वह मनुज मात्र का धन है,  
धर्मराज! उसके कण-कण का  
अधिकारी जन-जन है।

1. हमें किसे पीछे नहीं छोड़ना चाहिए ? ( )  
(अ) किसान को (आ) व्यापारी को (इ) श्रम करनेवाले को (ई) जन-जन को
2. जो कुछ न्यस्त प्रकृति में है, वह किसका धन है ? ( )  
(अ) मनुजमात्र का (आ) मजदूर का (इ) आलसी का (ई) किसान का
3. कण - कण का अधिकारी कौन है ? ( )  
(अ) जन-गण (आ) जन-जन (इ) जन-मन (ई) जन-समूह
4. विजीत प्रकृति से कौन सुख पाता है ? ( )  
(अ) श्रामिक (आ) रोजगार (इ) किसान (ई) धर्मराज
5. इस कविता के कवि का नाम क्या है ? ( )  
(अ) पंत (आ) दिनकर (इ) निशंक (ई) श्री प्रकाश

**16. निम्नलिखित गद्यांश पढ़कर दिये गये प्रश्नों के उत्तर विकल्पों में से चुनकर कोष्ठक में लिखिए।** **5x1=5**

हमारे भारतवर्ष में अनेक प्रकार के रसीले, स्वादिष्ट और स्वास्थ्यवर्धक फलों की खूब पैदावर होती है। मौसम में पैदा होनेवाले फल जरूर खाना चाहिए। आयुर्वेद के अनुसार मीठा अनार वात, पित्त और कफ दोषों को दूर करता है। पपीता पाचक और खून बढ़ानेवाला होता है। सेब मस्तिष्क एवं नस-नाडियों को शक्ति प्रदान करता है। अमरूद इतनी गुणकारी है कि इसे अमृत फल कहते हैं।

**प्रश्न :**

1. वात, पित्त और कफ दोषों को दूर करनेवाला फल क्या है ? ( )  
(अ) पपीता (आ) अनार (इ) सेब (ई) अंगूर
2. सेब खाने से किसे शक्ति मिलती है ? ( )  
(अ) खून (आ) आँख (इ) पाचक यंत्र (ई) मस्तिष्क
3. अमृत फल किसे कहते हैं ? ( )  
(अ) अनार (आ) पपीता (इ) अमरूद (ई) सेब
4. कौनसा फल खाने से खून बढ़ता है ? ( )  
(अ) पपीता (आ) अनार (इ) अमरूद (ई) सेब
5. किस प्रकार के फल जरूर खाना चाहिए ? ( )  
(अ) मौसम में पैदा होनेवाले (आ) भारतवर्ष में पैदा होनेवाले  
(इ) रसीले फल (ई) स्वादिष्ट फल

17. कवि श्री रामधरी सिंह 'दिनकर' जी के बारे में लिखिए।  
 18. 'जल ही जीवन है' कहानी के कहानीकार श्री प्रकाश के बारे में लिखिए।

## भाग-IV

8x3=24

19. दुनिया को पावन धाम बनाने के लिए हम क्या - क्या कर सकते हैं ?  
 20. मीरा की भक्ति भावना कैसी है ?  
 21. कलाम के विचार में "आदर्श छात्र" के गुण क्या है ?  
 22. लोकगीत और संगीत का क्या संबंध है ?  
 23. जल स्रोतों के रखरखाव के बारे में आप क्या सुझाव देना चाहेंगे ?  
 24. राजू को उसका पुराना स्कूल कैसा लगता था ?  
 25. नेल्सन मंडेला के जीवन से हमें क्या संदेश मिलता है ?  
 26. राजा कुमार वर्मा के राज्य में अकाल की स्थिति क्यों हुई होगी ?

## भाग-V

27. किसी एक प्रश्न का उत्तर 10 प्रक्तियाँ में लिखिए। 1x10=10  
 (अ) बरसते बादल कविता का सारांश अपने शब्दों में लिखिए।  
 (या)  
 (आ) "कण-कण का अधिकारी" कविता का सारांश अपने शब्दों में लिखिए।  
 28. किसी एक प्रश्न का उत्तर 10 प्रक्तियाँ में लिखिए। 1x10=10  
 (अ) "लोकगीत" पाठ का सारांश अपने शब्दों में लिखिए।  
 (या)  
 (आ) "जल ही जीवन है" पाठ का सारांश अपने शब्दों में लिखिए।

## भाग-VI

29. किसी एक पत्र लिखिए। 1x8=8  
 (अ) जन्म दिन मनाने के लिए पैसे माँगते हुए अपने पिता के नाम पर एक पत्र लिखिए।  
 (या)  
 (आ) बीमारी के कारण पाँच दिन की छुट्टी माँगते हुए कक्षाध्यापक के नाम पर पत्र लिखिए।  
 30. किसी एक विषय पर निबंध लिखिए। 1x8=8  
 (अ) 'प्रिय नेता' के बारे में लिखिए।  
 (या)  
 (आ) "खेलों का महत्व" के बारे में निबंध लिखिए।

# MUNICIPAL SCHOOLS

GOVT.OF ANDHRA PRADESH  
HINDI

Class-X

Max. Marks : 100

Time : 03:15 hr

## भाग-I

I. निम्न लिखित प्रश्नों के उत्तर सूचना के अनुसार लिखिए।

12x1=12

- आओ सब मिल कर गाएँ सावन।  
(रेखांकित शब्द का तत्सम रूप पहचान कर लिखिए।)  

श्रावण
श्रवण
श्रवणा
- राजू धीरे-धीरे चलने लगा। (क्रिया विशेषण पहचानकर लिखिए।)
- "1900" हिन्दी अक्षरों में लिखिए।
- इक्कीसवी सदी ..... अब अंत होनेवाला था।  
सही कारक पहचानकर लिखिए।  

का
के
की
- उनकी शिक्षा-दीक्षा केरला में हुई। (रेखांकित शब्द में समास पहचानिए।)  
तत्पुरुष, द्वंद्व
- आज का सूर्योदय बड़ा मनभावी है। (रेखांकित शब्द का संधि-विच्छेद कीजिए।)
- जो विश्व में सभी देशों से जुड़ा हो। (एक शब्द में लिखिए।)
- वह अंतरिक्षयान उनकी आँखों से ओझल हो गया। (रेखांकित मुहावरे का अर्थ क्या है ?)  
(गायब होना, दूर होना, चकित होना)
- स्त्रियाँ ढोलक की मदद से गाती हैं। (लिंग बदलकर फिर से पूरा वाक्य लिखिए।)
- लड़का पाठ पढ़ता है। (वचन बदलकर पूरा वाक्य लिखिए।)
- मजदूर ने मेहनत की। (वाक्य को वर्तमानकाल में बदलकर लिखिए।)
- मैं मेरा काम करता हूँ। (इस वाक्य को शुद्ध रूप में लिखिए।)

## भाग-II

II. प्रश्न संख्या 13 से 16 तक दिये गये गद्यांश, पद्यांश पढ़कर निर्देश के अनुसार उत्तर दीजिए।

13. निम्न लिखित गद्यांश पढ़कर उत्तर अनुच्छेद में पहचानकर लिखिए।

5x1=5

लड़के सबसे ज्यादा प्रसन्न हैं। बार-बार जेब से खजाना निकालकर गिनते हैं। महमूद गिनता है, एक-दो . . . दस बारह। उसके पास बारह पैसे हैं। मोहसिन के पास पंद्रह पैसे हैं। इनसे

अनगिनत चीजें लाएँगे - खिलौने, मिठाइयाँ, बिगुल, गेंद और न जाने क्या-क्या। हामिद एक गरीब लडका है। उस के मुँह पर प्रसन्नता झलक रही है।

**प्रश्न :**

- अ) 'आनंद' शब्द का पर्याय शब्द पहचानकर लिखिए।
- आ) 'अन' उपसर्ग से जुड़ा शब्द पहचानकर लिखिए।
- इ) 'ता' प्रत्यय से जुड़ा शब्द पहचानकर लिखिए।
- ई) 'कम' शब्द का विलोम शब्द पहचानकर लिखिए।
- उ) उसके पास बारह पैसे हैं। (सर्वनाम शब्द पहचानिए।)

**14. निम्नलिखित पद्यांश पढ़कर प्रश्नों के उत्तर विकल्पों में से चुनकर लिखिए।**

**5x1=5**

पकड वारि की धार झूलता है मेरा मन,  
आओ रे सब मुझे घेर कर गाओ सावन।  
इन्द्रधनुष के झूले में झूले मिल सब जन,  
फिर-फिर आये जीवन में सावन मनभावन ॥

**प्रश्न :**

- अ) कवि किसकी धार पकडना चाहता है? ( )  
(A) आकाश की (B) वारि की (C) बादल की (D) धनुष की
- आ) कवि ने किस ऋतु का वर्णन किया है? ( )  
(A) वर्षाऋतु का (B) वसंत का (C) ग्रीष्म का (D) शिशिर का
- इ) कवि किस झूले में झूलने को कहते हैं? ( )  
(A) सपनों के (B) पुष्पों के (C) इन्द्रधनुष के (D) आकाश के
- ई) कवि किसको बार-बार आने को कहते हैं? ( )  
(A) भादों को (B) सावन को (C) कार्तिक को (D) होली को
- उ) उपर्युक्त पद्यांश के कवि कौन हैं? ( )  
(A) दिनकर (B) निराला (C) प्रेमचंद (D) पंत

**15. निम्नलिखित गद्यांश पढ़कर दिये गये प्रश्नों के उत्तर एक वाक्य में लिखिए।**

**5x1=5**

इक्कीसवी सदी का अब अंत होनेवाला था और बाईसवी सदी की शुरूआत। पृथ्वी पर मानव ने काफी प्रगति कर ली थी। पर्यावरण की समस्या लगभग हल कर लिया गया था। लोग सुख-चैन से रह रहे थे।

**प्रश्न :**

- अ) किस सदी का अंत होनेवाला था?
- आ) पृथ्वी पर किसने काफी प्रगति कर ली थी?



इ) लोग कैसे जी रहे थे ?

ई) 'समस्या' शब्द का बहुवचन शब्द लिखिए ?

उ) यह गद्यांश किस पाठ से दिया गया है ?

16. निम्नलिखित गद्यांश पढ़कर नीचे दिये गये प्रश्नों के उत्तर विकल्पों से चुनकर लिखिए।

5x1=5

टेसी थॉमस की शिक्षा-दीक्षा केरल स्थित अलप्पुडा में हुई। यहीं पर उनका जन्म हुआ था। रक्षा अनुसंधान और विज्ञान को पुरुषों का क्षेत्र माना जाता था। मगर टेसी थॉमस ने अपनी मेहनत, लगन और दृढ़-निश्चय से पुरुष वर्चस्व वाले क्षेत्र में सफलता के नये शिखर तय किये हैं। थॉमस रक्षा अनुसंधान और विकास संगठन (डी.आर.डी.ओ) के अग्नि-5 कार्यक्रम की निर्देशक बनीं।

प्रश्न :

अ) टेसी थॉमस का जन्म यहाँ हुआ। ( )

(A) आंध्रप्रदेश (B) केरला (C) तमिलनाडु (D) कर्नाटक

आ) टेसी थॉमस किस कार्यक्रम की निर्देशक बनी ? ( )

(A) अग्नि-5 (B) डी.आर.डी.ओ (C) अग्नि-2 (D) अग्नि-4

इ) यह क्षेत्र पुरुषों का क्षेत्र माना जाता है ? ( )

(A) अर्थशास्त्र (B) इंजीनियरिंग  
(C) रक्षा अनुसंधान और विज्ञान (D) देश की सुरक्षा

ई) 'जन्म' शब्द का विलोम शब्द क्या है ? ( )

(A) जीवन (B) चरण (C) तोरण (D) मृत्यु

उ) 'धरती के सवाल - अंतरिक्ष के जवाब' कैसा पाठ है ? ( )

(A) कहानी (B) जीवनी (C) साक्षात्कार (D) निबंध

### भाग-III

III. निम्नलिखित प्रश्नों के उत्तर चार पंक्तियों में लिखिए।

2x4=8

17. रामधारीसिंह दिनकर के बारे में आप क्या जानते हैं ?

18. भगवत-शरण उपाध्याय के बारे में आप क्या जानते हैं ?

### भाग-IV

IV. निम्नलिखित प्रश्नों के उत्तर चार पंक्तियों में लिखिए।

8x3=24

19. कण-कण का अधिकारी किन्हे कहा गया है और क्यों ?

20. रैदास व मीरा की भक्ति भावना में क्या अंतर है ? स्पष्ट कीजिए।

21. हामिद ने चिमटा किसके लिए खरीदा और क्यों ?
22. 'गरबा' लोकगीत के बारे में आप क्या जानते हैं ?
23. एक छात्र में कौन-कौन से महत्वपूर्ण गुण होने चाहिए ?
24. मदर तेरेसा ने अपने जीवन में क्या सिद्ध कर दिखाया ?
25. राजू के प्रति नये स्कूल के साथियों का व्यवहार कैसा था ?
26. अकाल की समस्या निवारण के लिए राजा ने क्या-क्या उपाय सोचे होंगे ?

### भाग-V

**V. निम्नलिखित निबंधात्मक प्रश्नों के उत्तर सूचना के अनुसार लिखिए।** **1x10=10**

27. किसी एक प्रश्न का उत्तर आठ या दस पंक्तियों में लिखिए। **1x10=10**
  - (अ) विश्वबुधत्व का मूल मंत्र भारतीय दुनिया में किस तरह लायेंगे ?  
हम भारतवासी पाठ के माध्यम से स्पष्ट कीजिए।
  - (आ) "मीरा के पद" का भाव अपने शब्दों में लिखिए।
28. किसी एक प्रश्न का उत्तर आठ या दस प्रक्तियों में लिखिए। **1x10=10**
  - (अ) "ईदगाह" कहानी के माध्यम से हामिद के स्वभाव का वर्णन अपने शब्दों में कीजिए।
  - (आ) स्वच्छ जल हर एक का अधिकार है। जल को सुरक्षित रखने के लिए हमें क्या करना चाहिए ?

### भाग-VI

**VI. निम्नलिखित प्रश्नों के उत्तर सूचना के अनुसार लिखिए।** **1x8=8**

29. किसी एक प्रश्न का उत्तर लिखिए। **1x8=8**
  - (अ) छुट्टी माँगते हुए अपने प्रधानाध्यापक के नाम पर एक पत्र लिखिए।
  - (आ) नगर निगम अधिकारी को अपने मोहल्ले की सफाई के लिए पत्र लिखिए।
30. किसी एक प्रश्न का उत्तर लिखिए। **1x8=8**
  - (अ) 'पर्यावरण की रक्षा सब की रक्षा है।' इस विषय पर निबंध लिखिए।  
(या)
  - (आ) प्रिय त्यौहार / दीपावली के बारे में निबंध लिखिए।

\* \* \*

# MUNICIPAL SCHOOLS

GOVT.OF ANDHRA PRADESH

## ENGLISH

**CLASS-X**

**Max.Marks: 100**

**Time : 03.15 hr.**

*Instructions:*

- 1.The question paper has 35 questions in three sections (A,B& C)
2. Answer all the questions on a separate answer book supplied to you.
3. 15 minutes of time is allotted exclusively for reading the question paper and 3.00 hours for writing the answers.
4. Answer all the questions of SECTION - B (Grammar & Vocabulary) in the same order at one place in your answer book.

### **SECTION - A : READING COMPREHENSION**

**Questions (1 - 5) : Read the following passage carefully.**

The last time the two friends met, Ray was in hospital, on his death bed. It was a Sunday and Roberge, true to habit, arrived on the dot at 9 am. “He had grown so weak that he looked frail as a child. I did not stay long, and as I was leaving, Manikda said, *Bhalo laglo* [ it was nice]. Those were his last words to me, “said Roberge.

One important fallout of this friendship was the establishment of Chitrabani, a communication and film institute, the first of its kind in West Bengal, which Roberge founded in 1970 and to which Ray, as a token of friendship, lent his name as co-founder. Ray was in the first governing body and after a few terms readily agreed to be the institute’s adviser. Roberge arranged most of the initial funding from Canadian agencies. “I had no reservations applying for them, for I feel richer countries in the West are indebted to countries like India,” he said.

**(Rendezvous with Ray)**

**Now, answer the following questions**

**5 × 2 = 10 M**

- 1) Where did the speaker meet Ray the last time?
- 2) How was Ray in hospital?
- 3) Who is Manikda ?

[       ]

A) Apu

B) Ray

C) Roberge

- 4) When did Chitrabani established? [      ]  
 A) 1970                                      B) 1972                                      C) 1975
- 5) What is the meaning of the word 'frail' ? [      ]  
 A) strong                                      B) weak                                      C) active

**Questions (6 - 8) : Read the lines of the poem carefully.**

There in the West the song thrush warbles  
 She weaves her nest to hold her clutch  
 A long wait now to find a partner  
 The eggs are laid, there are not much.  
 These chicks could be the last ones ever  
 The last to fly and sing and mate.  
 Our grandchild knows the song thrush never  
 Or will the dreamer wake ?

**(Or Will the Dreamer Wake? )**

**Choose the correct answer for the following questions : 3 × 2 = 6 M**

6. The thrush is \_\_\_\_\_ [      ]  
 A) a bird sing                                      B) a song bird                                      C) a song
- 7) The thrush could not find its partner. It indicates [      ]  
 A) the decrease in its number  
 B) the increase in its number  
 C) the growth in its number
- 8) The modern man is addressed as \_\_\_\_\_ in this stanza [      ]  
 A) a cub                                      B) a thrush                                      C) grand child

**Questions (9 - 10) : Read the passage carefully.**

As a young cartoonist, Walt Disney faced many rejections from newspaper editors, who said he had no talent. One day a minister at a church hired him to draw some cartoons. Disney was working out of a small mouse infested shed near the church. After seeing a small mouse, he was inspired. That was the start of Mickey Mouse.

**(Every Success Story Is Also A Story Of Great Failure )**

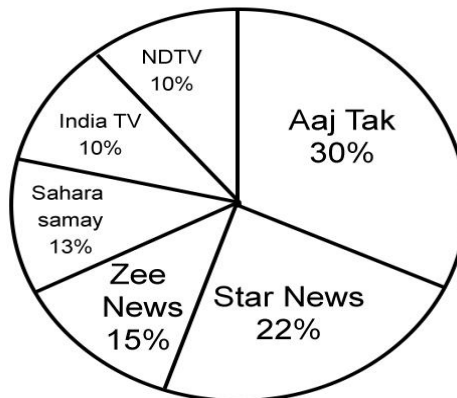
**Now, answer the following questions**

**2 × 2 = 4 M**

- 9) What was Walt Disney? [      ]
- A) A receptionist
- B) A Cartoonist
- C) A Church minister
- 10) What was the result of the inspiration of seeing a small mouse?
- A) Creating Mickey Mouse
- B) Attending Church
- C) Creating great cartoons

**Questions (11 - 15) : Study the following Pie – chart carefully**

Viewership of News channels in a town (as % of total)



**Now, answer the following questions**

**5 × 2 = 10 M**

11. How many TV channels are shown in the diagram?
12. Which is the most Preferred TV channel for watching news?
13. If there are 1000 viewers, how many watch India TV? [      ]
- A) 100      B) 200      C) 300
14. What is the percentage of viewers who watch zee News? [      ]
- A) 13%      B) 15%      C) 25%
15. State which of the following sentences is correct [      ]
- A) The viewership of AajTak is double that of Zee News
- B) The viewership of AajTak is double that of India TV
- C) The Viewership of AajTak is half of that of NDTV

**SECTION – B: GRAMMAR & VOCABULARY**

**Note :** Answer all the questions of **Section - B** in the same order at one place in your answer book.

- 16) **Combine the following sentences using 'Who'** **2M**

Wangari Maathai is an environmental Activist . She started the Green Belt Movement

- 17) **Change the following sentence into 'passive voice '** **2M**

The king ordered the potter to lead the Army

- 18) **Combine the following sentences using 'Since'** **2M**

He wanted to stay at home for some more days. He wanted to apply for Leave

- 19) **Fill in the blanks with suitable preposition / prepositional phrases given in the brackets.** **2 × 1 = 2 M**

A) Madhu got a job \_\_\_\_\_ his abilities and skills

[instead of / by means of ]

B) Ramu was afraid \_\_\_\_\_ his enemies [ of / for]

- 20) **Fill in the blanks with suitable form of verbs given in brackets** **2 × 1= 2 M**

Grand pa\_\_\_\_\_ [give] It to your mother before he \_\_\_\_\_ [die]

- 21) Your friend who rides motorcycle doesn't use a helmet

Advise him / her to use a helmet **2M**

- 22) **Change the following into a polite request** **2M**

You to the postmaster : What is the pin code of Hyderabad?

- 23) What does the following sentences mean? **2 × 1= 2 M**

**Choose the right answer and write it in your answer book**

i) Can I carry the bag for you?

A) Giving a advise [ ] B) Making a request [ ]

C) Giving a suggestion [ ] D) Making an offer [ ]

ii) Would you mind closing the door?

A) Giving permission [ ] B) Making a request [ ]

C) Seeking permission [ ] D) Asking a question [ ]

- 24) **Read the paragraph and write the synonyms of the underlined words Choosing from the words given in the box**  $4 \times 1 = 4 \text{ M}$

*Famous, documents, noticed, friends, upset, search*

One Sunday morning, Roberge found [a] Ray in a disturbed [b] mood.

A few well-known [c] personalities of the city had visited him earlier to go through some of his manuscripts [d]

- 25) **Read the paragraph and match the words under 'A' with their antonyms under 'B'** write your answers and their corresponding numbers in the answer book  $4 \times 1 = 4 \text{ M}$

Mrs Slater: I'm amazed at you, Victroia . I really am. Be off now, and change your dress **before** your Aunt Elizabeth and your uncle Ben **Come**. It would **never** do for them to find you in colours with grandfather lying **dead**, upstairs.

<b>A</b>		<b>B</b>	
a) Come	[       ]	1) After	
b) Never	[       ]	2) Alive	
C) Before	[       ]	3) Shallow	
d) Dead	[       ]	4) Always	
	[       ]	5) Down stairs	
		6) go	

26. **Fill in the blanks with the right form of the words given in the brackets** **4 × 1 = 4 M**

"The Challenges in our lives are there to \_\_\_\_\_[a] [ Strengthen / Strengthens / strengthening] our convictions. They are not there to run us over" said Nick. In 1990 Nick won the \_\_\_\_\_[b] [ Australia / Australian / Australasion] Young Citizen of the Year award for his \_\_\_\_\_[c] [ brave / bravely/ bravery ] and \_\_\_\_\_ [d] [preserve / perseverance / perseruede]

- 27) **Complete the following spellings with 'au,ca,oa,ei,ee,uo'** **2 × 1 = 2M**

It was a unique fr\_ \_ndship [a] that developed between a French-Canadian Priest and one of the world's gr \_ \_ test [b] film directors.

- 28) **Complete the words with correct suffixes given in brackets.** **2 × 1 = 2M**

The three legs : One leg is peace, the other leg is good govern \_\_\_\_\_ [ance / ment], the third leg is sustain \_\_\_\_\_[ed/able] management of resources.

29. **Find the wrong spelt word and write the correct spelling.** **2×1=2 M**

A) mainstream, deeisin, distract, disability    Ans:- \_\_\_\_\_

B) artist, endorce, accusation, detractor    Ans:- \_\_\_\_\_

30. **Read the following entry of the word 'loyal' given below** **2×1=2M**

Loyal /'ləɪəl/ adj -[to sb / sth] remaining faithful to sb / sth and supporting them or it **SYN** true : a loyal friend / supporter. She has always remained loyal to her political principles. **OPP** disloyal-loy.al.ly /'ləɪ.ə.li/ adu

**Now, answer the following questions** using the information above

- a) What is the part of speech of the word 'loyal' ?
- b) Write the antonym of the word 'loyal' ?



31. **Arrange the following words under correct headings  $8 \times \frac{1}{4} = 2 \text{ M}$**

Ding – dong, boo-boo, chop-chop, lip-lop, chit-chat, chuk-chuk,

Ta-ta, see-saw

**Duplicative**

---



---



---



---

**Alliterative**

---



---



---



---

32. Match the following one word substitutes in PART-A with their meanings in PART -B ( Write only the number and their corresponding letters in your answer book.)  **$4 \times \frac{1}{2} = 2 \text{ M}$**

**Part - A**

1) Mercenary

[       ]

2) Misogynist

[       ]

3) Teetotaler

[       ]

4) Theist

[       ]

**Part - B**

a) Words inscribed on a tomb

b) a person who can do anything for money

c) a person who solves problems in a practical and sensible way

c) one who abstains from taking alcohol

[       ] d) One who believes in god

e) One who hates women

**SECTION - C : CREATIVE EXPRESSION**

33. A) In the lesson "The Dear Departed" Mr. Abel Merry weather made a Shocking announcement at the end. Amelia and Elizabeth were shocked at this.

Write a possible conversation between Amelia and Elizabeth highlighting the events that took place in their family. **10M**

**( OR )**

- B) You've read that in Ponnimanthuri village the leather factories Discharged chemicals into the environment. Through the chimneys of the Factories chemical dust was emitted and fell on earth for miles around, polluting the earth and making them barren. You are Vijayasama, a victim of this chemicals pollution.

Now, writes your feelings in the form of a diary entry

34.

- A) The Climatic conditions are Changing very fast. The day temperatures are reaching terrible levels. The pattern of rainfall is not the same every year. Everyone in the society is worried, you feel that we have to act immediately to do something to improve weather conditions.

Write a letter to your friend K. Ramesh explaining to him the importance of planting trees, rain harvesting techniques like soaking pits and prevention of wastage of water **10M**

**(OR)**

- b) Write the Biographical sketch of General Bipin Rawat, the first chief of Defence staff

Birth	: 16 march 1958
Birth Place	: Pauri, uttar Pradesh
Primary Education	: Combrian Hall school Dehradun
Graduation	: Indian MilitryAcadamy
Higher Command Course	: United States Army Command Course
Spouse	: MadhulikaRowal
Children	: 2
Branch / service	: Indian Army
Rank	: General
Unit	: 5/11 Gorkha Rifles
Awards	: Param vishishtseva medal Uttam yudh seva medal Ati vishisht seva medal Sena medal Padma Vibhushan [2022] Posthumous
Death	: 8 December 2021 in helicopter Crash

35. A) Read the following passage carefully focusing on the underlined parts

There is one difference, however. Outside Mr.Nana's front are there large empty metal drums, the bright red paint now flaking away, but the skull and crossbones symbol **(A)** clearly visible on each. And in a clearing 200m away from the village, next to a stream **(B)**

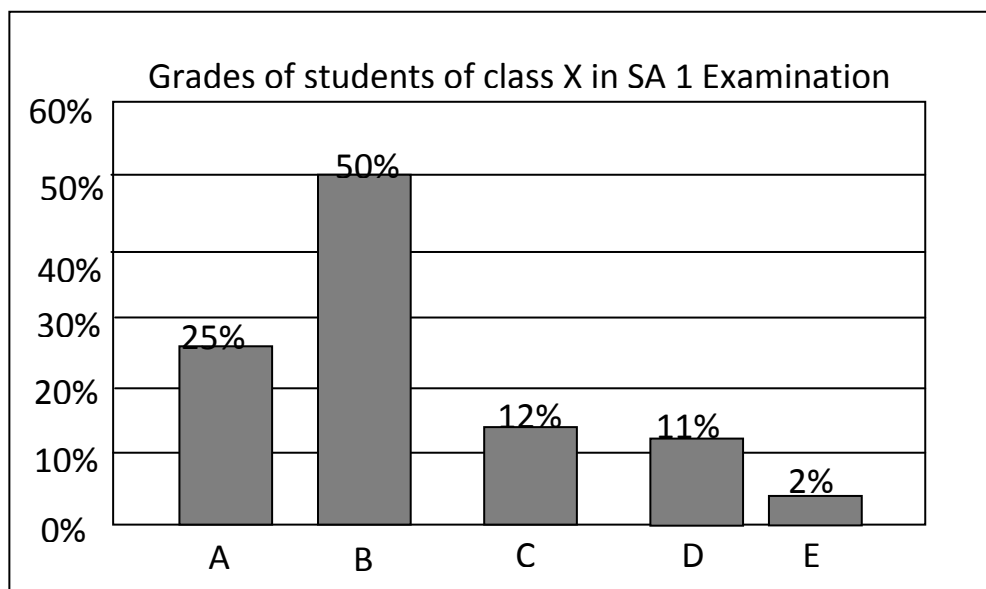
that the villagers get their drinking water from, is an enormous pyramid of identical drums, (C) reaching to the sky some of them are badly corroded (D) their slimy contents of various colours – grey, dark green, bright orange, etc. leaking out, down on to the baked African earth and into the stream. (E) some have fallen down and rolled – or been rolled by playful children – into the bush. Some are smoking in the midday heat. Some are swelling as if their contents are bursting to get out. Some have already burst.

Now, frame 'WH' questions to get the underlined part as answers.

**10 M**

**(OR)**

B) Study the following bar diagram carefully.



Note : X axis = grades of students; Y axis = percentages of students

Now write a paragraph describing the information depicted in the bar diagram above.

**\* \* \* \* ALL THE BEST \* \* \* \***

**MUNICIPAL SCHOOLS**

GOVT.OF ANDHRA PRADESH

**ENGLISH****CLASS-X****Max.Marks: 100****Time : 03.15 hr.***Instructions :*

1. The question paper has 35 questions in three sections (A, B & C)
2. Answer all the questions on a separate answer book supplied to you.
3. 15 minutes of time is allotted exclusively for reading the question paper and 3.00 hours for writing the answers.
4. Answer all the questions of SECTION - B (Grammar & Vocabulary) in the same order at one place in your answer book.

**SECTION - A : READING COMPREHENSION****Questions (1 - 5) : Read the following passage carefully.**

His disability came without any medical explanation – a rare occurrence called Phocomelia – and Nick and his parents spent many years asking why this cruel trick would happen of them. 'My mother was a nurse and she did everything right during pregnancy but she still blamed herself, ' he said .

'It was so hard for them but right from the start they did their best to make me independent.

'My dad put me in the water at 18 months and gave the courage to learn how to swim.'

**(Attitude Is Altitude)****Now, answer the following questions****5 × 2 = 10 M**

1. What was Nick's mother? [      ]
2. How did his father teach Nick Swimming? [      ]
3. Nick's mother blamed herself for ..... [      ]
  - A) not taking healthy food
  - B) not doing right during pregnancy
  - C) not predicting Phocomelia
4. What is Phocomelia ? [      ]
  - A) hereditary disability
  - B) a rare occurrence
  - C) disability without medical explanation

5. It was so hard for them ..... what is so hard for them [      ]
- A) making Nick independent  
B) Sending Nick to mainstream School  
C) Having disabled son

**Questions (6 - 8) : Read the lines of the poem carefully.**

Once upon a time, son  
They used to laugh with their heart  
And laugh with their eyes  
But now they only laugh with their teeth  
While their ice block cold eyes  
Search behind my shadow

**(Once Upon A Time )**

**Choose the correct answer for the following questions : 3 × 2 = 6 M**

- 6) In the stanza Conversation is between..... [      ]
- A) a father and his son  
B) father and mother  
C) between two friends
- 7) In the above stanza the poet talking about [      ]
- A) hypocrisy of past people  
B) hypocrisy of present people  
C) about his childhood
- 8) What is the expression ice – block – cold eyes [      ]
- A) Expression less eyes      B) wet eyes      C) very cold eyes

**Questions (9 - 10) : Read the passage carefully.**

But one day while scrubbing the floor, the house wife suddenly asked herself, 'What is my name?' The query shook her up. Leaving the mopping cloth and *muggu* basket there itself she stood near window scratching her head, lost in thoughts. 'What is my name ---what is my name ? The house across the road carried a name - board, Mrs M. Suhasini, M.A, Ph.D., Principal, 'X' Collage. Yes she too had a name as he neighbour did -- ' How could I forget like that? In my scrubbing zeal I have forgotten my name.

**(What Is My Name )**

**Now, answer the following questions****2 × 2 = 4 M**

- 9) What did the house wife forget? [      ]  
 A) Scrubbing the floor  
 B) her name  
 C) making muggulu after mopping
- 10) Why did the house forget the name? [      ]  
 A) because of her house hold works.  
 B) because of job  
 C) due to her scrubbing zeal

**Questions (11 - 15) : Study the following table carefully**

Students name	favourite colour	favourite food
Ramya	blue	Pizza
Reshma	Red	Biryani
Kavitha	Green	Ice-Cream
Renu	Red	Sweets
Riya	Black	Chocolates

**Now, answer the following questions****5 × 2 = 10M**

11. What does the table shows?
12. What is the favourite food of Renu?
13. Blue is the favourite Colour of ..... [      ]  
 A) Ramya                      B) Renu                      C) Riya
14. Reeshma's Favourite food is ..... [      ]  
 A) Ice – Cream              B) Biryani                  C) Sweets
15. Choose the True Statement among the following [      ]  
 A) Kavitha likes Pizza  
 B) Riya doesn't like chocolates  
 C) Red is the favourite colour of Reshma and Renu

**SECTION – B: GRAMMAR & VOCABULARY**

**Note :** Answer all the questions of **Section - B** in the same order at one place in your answer book.

- 16) **Combine the following sentences using 'Who'** **2M**

Nick is a disabled man. He became a motivational speaker.

- 17) **Change the following sentence into 'passive voice '** **2M**

Father Carried my luggage

- 18) **Combine the following sentences using 'As'** **2M**

The narrator came to his village. His marriage was arranged by his parents

- 19) **Fill in the blanks with suitable preposition / prepositional phrases given in the brackets.** **2 × 1 = 2 M**

A) Many freedom fighters scarified their lives \_\_\_\_\_ our Country

[ in case/ for the sake of / in place of ]

B) Ravi did not attend the school yesterday because he suffered

\_\_\_\_\_ fever [ of / with / from ]

- 20) **Fill in the blanks with suitable form of verbs given in brackets**

**2 × 1 = 2 M**

After I \_\_\_\_\_ (complete) my home work, I \_\_\_\_\_ (Sleep)

- 21) Your friend is wasting time by chatting with friends. Your advise him  
not to Waste time on Chatting **2M**

- 22) **Change the following into a polite request** **2M**

You to your friend, “Drop me at the bus stop”



23) What does the following sentences mean?

2 × 1 = 2M

**Choose the right answer and write it in your answer book**

i) Shall I use your mobile once ?

A) Making an offer [ ] B) Making a request [ ]

C) Giving a permission [ ] D) Seeking permission [ ]

ii) What about going for a walk ?

A) Advise [ ] B) Suggestion [ ]

C) Seeking information [ ] D) Giving permission [ ]

24) **Read the paragraph and write the synonyms of the underlined words Choosing from the words given in the box 4 × 1 = 4M**

deviation, origin, variety, scarcity, designs, regularity

The forested mountains were the Source (a) of water and the source of rain, so when you deforest you cause a shortage (b) of water and change (c) of rainfall patterns (d) and therefore people are not able to get food and water.

25) **Read the paragraph and match the words under 'A' with their antonyms under 'B' write your answers and their corresponding numbers in the answer book 4 × 1 = 4 M**

The last (a) time the two friends (b) met, Ray was in hospital, on his deathbed. It was a Sunday and Roberge true (c) to habit arrived (d) on the dot at 9 am. He has grown so weak that he looked frail as child.

**A**

a) last [ ]

b) friends [ ]

c) true [ ]

d) arrived [ ]

**B**

1) false

2) enemies

3) strong

4) departed

5) first

6) over looked

26. **Fill in the blanks with the right form of the words given in the brackets** **4 × 1 = 4 M**

The Sense of \_\_\_\_\_ (a) [ pride / proud ] sense of dignity that they are not begging, that they are doing things for themselves was very \_\_\_\_\_ (b) [empowering / empowerment]. That \_\_\_\_\_ (c) [ transformation / transform] was very \_\_\_\_\_ (d) [ Power / Power full]

- 27) **Complete the following spellings with 'au,ue,oa,ei,ee,io' 2 × 1 = 2M**

Lethargy creeps in if the holiday contin \_ \_ s (a) over an extended per \_ \_ d (b).

- 28) **Complete the words with correct suffixes given in brackets 2 × 1 = 2M**

Roberge does not endorse the accusa \_\_\_\_\_ ( tion / sion) of Ray's detractors that the master direct \_\_\_\_\_ (or / er) made his reputation selling India's poverty to the west.

29. **Find the wrong spelt word and write the correct spelling 2×1=2M**

a) programmer    buroeu    malicious    lethargy    Ans:- \_\_\_\_\_

b) occurrence    perseverance    jewellery    begger    Ans:- \_\_\_\_\_

30. **Read the following entry of the word 'loyal' given below 2x1=2M**

Lethargy / 'lɛθədʒi/ noun , a lack of energy and enthusiasm SYN inactivity ; the doctor suspected that the patients depression and lethargy were a result of seasonal affective disorder. OPP ; energy

**Now, answer the following questions** using the information above

a) What is the part of speech of the word 'lethargy' ?

b) Write the antonym of the word 'lethargy' ?

31. **Arrange the following words under correct headings**  $8 \times \frac{1}{4} = 2 \text{ M}$

Papa, boo – boo, pitter – patter, chuk- chuk, mish – mash,  
helter – skelter, ha ha, zig - zag.

**Duplicative**

**Alliterative**

\_\_\_\_\_

\_\_\_\_\_

\_\_\_\_\_

\_\_\_\_\_

\_\_\_\_\_

\_\_\_\_\_

\_\_\_\_\_

\_\_\_\_\_

32. Match the following one word substitutes in PART-A with their meanings in PART -B ( Write only the number and their corresponding letters in your answer book.)  $4 \times \frac{1}{2} = 2 \text{ M}$

**Part - A**

**Part - B**

1) Polyglot

[ ]

a) A Person who abstains from taking alcohol

2) intellectual

[ ]

b) A person or thing that can not corrected

3) incorrigible

[ ]

c) A person of good understanding, knowledge and reasoning power

4) versatile

[ ]

d) A person who knows many languages

[ ]

e) One who believes in God

f) One who possesses many talents

**SECTION - C : CREATIVE EXPRESSION**

33.

- A) Sarada forgot her name due to her scrubbing zeal . She felt sorry for not remembering her name. She enquired everyone about her name, but no use .Finally she asks her husband for her name while serving the dinner.

Imagine the situation and write the possible conversation between Sarada and her husband. **10M**

**(OR)**

- (B) Murthy got high rank in IIT examination but his father refused to send him to study at IIT. He felt sad and agreed to study in Mysore by understand their family financial position.

Imagine that you are Murthy and write the diary entry expressing your sadness for not joining at IIT.

34.

- A) The Government of A.P is being implementing Ammavodi programme in all government schools. You also benefited by this programme. You may felt very happy when received Ammavodi amount .

So write a letter to your friend expressing your feelings regarding Ammavadi programme **10M**

**(OR)**

B) Write the Biographical sketch of V.V.S laxman.

Full Name	:	Vangi Purapu Vekata Sai Laxman
Date of birth	:	Nov 1, 1974,
Parents	:	V. Shantaram and V. Satyabhama
Home town	:	6 feet
Qualification	:	Honorary Doctorate Degree
Batting style	:	Right Handed
Bowling style	:	Right arm off spin
Teams played for	:	India, Hyderabad, Lancashire, Deccan Chargers, Kochi Tuskers Kerala
Awards	:	Padmasri Award in 2011, Arjun award in 2001 Wisdom Cricketer of the year (2002).

35. Read the following passage carefully focusing on the underlined parts

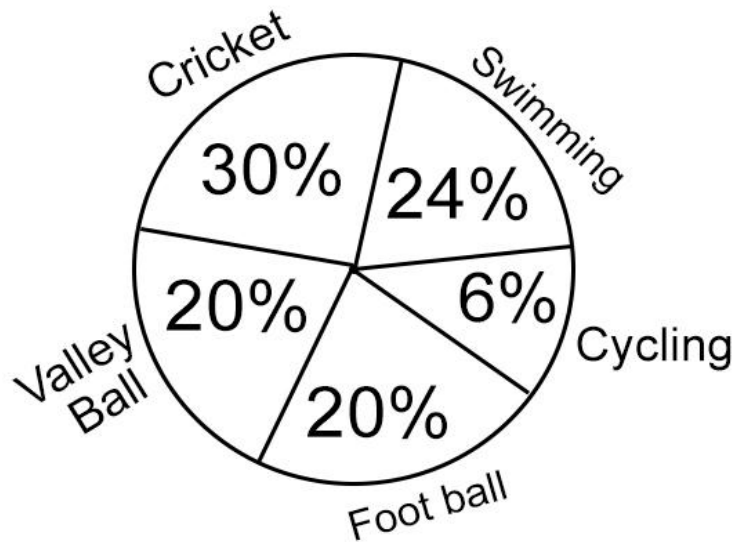
(A) The next day he went with his wife is the capital **(A)**. The king was pleased to see him and ordered the potter to lead the army **(B)** into battle the next day **(C)**. The enemy were not far from the fates of the city. A splendid house **(D)** had been prepared for the potter and his wife. The horse **(E)** which would carry him into battle was ready in the stable.

Now, frame 'WH' questions to get the underlined part as answers.

**10 M**

**( OR )**

(B) The famous international school Students favourite games



Study the pie chart and write the paragraph describing the information in it.

**\*\*\* ALL THE BEST \*\*\***

# MUNICIPAL SCHOOLS

GOVT.OF ANDHRA PRADESH

## MATHEMATICS

CLASS-X

Max. Marks: 100

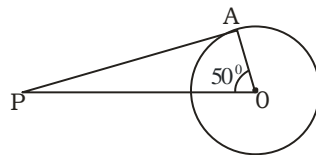
Time : 03.15 hr.

## SECTION - I

12×1 = 12 M

**Note: (i) Answer all the Questions.****(ii) Each Question carries 1 Marks.**

- Highest power of 2 that divides 80
- Statement (A): Zero of the polynomial  $x-2$  is 2  
Statement (B): Zero of the polynomial  $2-x$  is 2  
Choose the correct answer.  
(i) Both A and B are true (ii) A is true B is false  
(iii) A is false B is true (iv) Both A and B are false
- In  $\triangle ABC$ ,  $AB^2 = BC^2 + AC^2$  then right angle is at \_\_\_\_\_
- A, B are disjoint then  $A \cap B =$  \_\_\_\_\_
- In the below figure PA is tangent and  $\angle POA = 50^\circ$  then  $\angle OPA = ?$

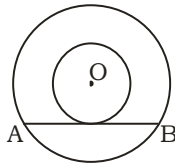


- Match the following:  
(A)  $\frac{1}{\operatorname{Cosec} \theta}$  (i)  $\sin \theta$   
(B)  $\sqrt{1 - \sin^2 \theta}$  (ii)  $\cot \theta$   
(C)  $\tan(90 - \theta)$  (iii)  $\cos \theta$
- If  $\eta^{\text{th}}$  term of AP is  $4+3n$ . find its 2<sup>nd</sup> term.
- In  $\triangle ABC$   $\angle B = 90^\circ$   $\sin A - \cos C = ?$
- $2x+3y=4$  and  $3x+2y=4$  have unique solution True/False \_\_\_\_\_
- If  $\tan \theta = \frac{3}{4}$  then  $\sin \theta$ ? ( $\theta$  is acute)
- If a die is rolled find the probability that it is not 7.
- How far (3,4) from origin?

## SECTION - II

 $8 \times 2 = 16$  M**Note: (i) Answer all the Questions.****(ii) Each Question carries 2 Marks.**

13. If  $A=(2,5)$  and  $B=(4,7)$  are the end points of diameter of a circle then find its centre.



14. Two concentric circles of radii 5cm and 3cm then find the length of chord AB of bigger circle, which is tangent to smaller circle is?
15. If  $m = \log_2 5$  and  $n = \log_2 15$  then write  $\log_2 3$  in terms of m and n
16. Check whether (2,3) is a solution of  $3y-4x=1$ .
17. If Mean of the data 4,11,16,8,x is 9 then find x.
18. If two dice are rolled at a time then they will show both even numbers list out all possible out comes.
19. Draw a Venn diagram for  $A \subset B$ .
20. Find the Median of the numbers 2,4,6,8,.....,100.

## SECTION - III

 $8 \times 4 = 32$  M**Note: (i) Answer all the Questions.****(ii) Each Question carries 4 Marks.**

21. If  $P(x) = x^2 - 5x + 6$  find zeroes of  $P(x)$ .
22. For what values of K that the linear equations have no solution  
 $2x + 3y = 4$   
 $Kx + 2y = 5$
23. Find the centroid of the triangle formed by A (2,3) B(5,-4) and C(-1,7)
24. Prove that the tangents drawn from an external point to a circle are equal in length.



25. Write the following in Roster form
- 1)  $A = \{x / x \text{ is a prime number less than } 10\}$
  - 2)  $B = \{x / x = n^2, n \in N, 1 \leq n \leq 6\}$
26. Prove that  $\frac{\sin \theta}{1 + \cos \theta} + \frac{1 + \cos \theta}{\sin \theta} = 2 \operatorname{Cosec} \theta$
27. In  $\triangle ABC$ ,  $\angle A, \angle B, \angle C$  are in AP then verify  $\angle B = 60^\circ$ ?
28. The angle of depressions of two points on either sides of a tower of height  $h$  mtrs. are  $\alpha, \beta$  then draw a rough diagram.

**SECTION - IV****5×8 = 40 M****Note: (i) Answer all the Questions.****(ii) Each Question carries 8 Marks.****(iii) Each Question has internal choice.**

29.a)  $A = \{3, 6, 9, 12, 15, 18, 21\}$

$B = \{4, 8, 12, 16, 20\}$

$C = \{2, 4, 6, 8, 10, 12, 14, 16\}$

$D = \{5, 10, 15, 20\}$  then find

(A)  $A \cup B$

(B)  $B \cap C$

(C)  $C - D$

(D)  $D - A$

**(OR)**

b) Find the Mode of the following data

No. of Cars	0-10	10-20	20-30	30-40	40-50	50-60	60-70	70-80
Frequency	7	14	13	12	20	11	15	8

- 30.a) Find the area of triangle formed by the vertices  $A(2, -3)$ ,  $B(-5, 4)$  and  $C(-3, -2)$

**(OR)**

b) Solve the system of equations  $\frac{2}{\sqrt{x}} + \frac{3}{\sqrt{y}} = 2$  and  $\frac{4}{\sqrt{x}} - \frac{9}{\sqrt{y}} = -1$

- 31.a) Prove that  $\sqrt{5}$  is an irrational number

**(OR)**

b) If  $\sec \theta + \tan \theta = p$  then prove that  $\sin \theta = \frac{p^2 - 1}{p^2 + 1}$

- 32.a) ₹700 can be distributed into 7 prizes so that each prize is ₹20 less than the its preceding prize. Then find all the prizes.

**(OR)**

- b) One card is drawn from a well shuttled pack of cards, then find the probability of getting.

1) A king of black

2) A face Card

3) Queen of clubs

4) Not a diamond card

- 33.a) Draw a graph of  $p(x) = x^2 - x - 6$  and find the zeros of  $p(x)$

**(OR)**

- b) Draw a pair of tangents to a circle of radius 5 cm from a point which is 8cm away from its centre of circle.

**\* \* \* \* ALL THE BEST \* \* \* \***

# MUNICIPAL SCHOOLS

GOVT.OF ANDHRA PRADESH

## MATHEMATICS

CLASS-X

Max. Marks: 100

Time : 03.15 hr.

## SECTION - I

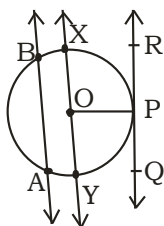
12×1 = 12 M

**Note: (i) Answer all the Questions.****(ii) Each Question carries 1 Marks.**

- $\log 2 + \log 5$  value is  
(A) 10 (B) 1 (C) 3 (D) 25
- Write the set  $A = \{x : x \text{ is a Natural number smaller than } 6\}$  in Roster form.
- Match the following
 

(i) The degree of $P(x) = x^3 - 3x^2 + 4x + 6$	(a) -1
(ii) If $p(x) = t^3 - 1$ then $P(0) =$	(b) 0
(iii) Sum of the zeroes of $p(x) = x^2 - 1$	(c) 3

(A) i → c, ii → a, iii → b	(B) i → c, ii → b, iii → a
(C) i → b, ii → a, iii → c	(D) i → b, ii → c, iii → a
- Statement P: If  $\frac{a_1}{a_2} \neq \frac{b_1}{b_2}$  then  $a_1x + b_1y + c_1 = 0$  and  $a_2x + b_2y + c_2 = 0$  are parallel lines.  
Statement Q: The general form of G.P is a, a+d, a+2d, a+3d .....  
(A) P-True, Q-True (B) P-True, Q-False  
(C) P-False, Q-True (D) P-False, Q-False
- In an A.P 3, 1, -1, -3 ..... common difference is \_\_\_\_\_
- The distance between the points (3, 8) and (6, 8) is \_\_\_\_\_ units.
- In  $\triangle ABC$ ,  $AC^2 = AB^2 + BC^2$  then  $\angle B =$  \_\_\_\_\_
- In the given figure which of the following is the tangent to the circle



- |                     |                     |                     |                     |
|---------------------|---------------------|---------------------|---------------------|
| (A) $\overline{AB}$ | (B) $\overline{XY}$ | (C) $\overline{QR}$ | (D) $\overline{OP}$ |
|---------------------|---------------------|---------------------|---------------------|

9.  $\cos 12^\circ - \sin 78^\circ$  value is \_\_\_\_\_
10. Given which of the following are True.  
 (i) The probability of an impossible event is 1  
 (ii)  $P(E)$  is the probability of any event  $E$ , Then  $0 \leq P(E) \leq 1$   
 (iii) For any event  $E$ ,  $P(E) + P(\bar{E}) \equiv 1$   
 (A) i, ii (B) ii, iii (C) i, iii (D) i, iii, iii
11. Mode of the data 2,6,4,5,0,2,1,2,3 is \_\_\_\_\_
12. If  $\operatorname{Cosec} \theta + \tan \theta = 5$  Then  $\operatorname{Cosec} \theta - \tan \theta =$  \_\_\_\_\_

**SECTION - II****8×2 = 16 M****Note: (i) Answer all the Questions.****(ii) Each Question carries 2 Marks.**

13. List all the subsets of  $A = \{x, y, z\}$
14. Check whether  $-2$  and  $2$  are the zeroes of the polynomial  $x^4 - 16$
15. Find the 10<sup>th</sup> term of an AP, 5,1,-3-7 .....
16. Find the centroid of the triangle whose vertices are (3,-5), (-7,4) and (10,-2).
17. A wire attached to vertical pole of height 18m is 24m long and has a stake attached to the other end. How far from the base of the pole should the stake be driven so that the wire will be taut.
18. If  $\sin A = \cos B$ , Then prove that  $A + B = 90^\circ$
19. A person is flying a kite at an angle of elevation ' $\alpha$ ' and the length of the thread from the hand to kite is ' $l$ ' draw the diagram for this data.
20. One card is drawn from a well shuffled deck of 52 cards. Calculate the probability that the card will.  
 (i) be an ace (ii) not be an ace

**SECTION - III****8×4 = 32 M****Note: (i) Answer all the Questions.****(ii) Each Question carries 4 Marks.**

21. If  $2^{x+1} = 3^{1-x}$  then find the value of  $x$ .
22. An algebra text book has a total of 1382 pages. It is broken up two parts, the second part of the book has 64 pages more than the first part. How many pages are in each part of the book?
23. Find the sum of the first 40 positive integers divisible by 6.

24. Find the value of 'k' for which the points (7,-2), (5,1) and (3,k) are collinear.
25. A chord of a circle of radius 10 cm subtends a right angle at the centre. Find the area of the corresponding (i) Minor segment and (ii) Major segment (use  $\pi = 3.14$ ).
26. Show that  $\sqrt{\frac{1+\sin A}{1-\sin A}} = \sec A + \tan A$ .
27. Write the formula to find Median of grouped data and explain each term in it.
28. Draw the Venn diagrams of the following
- (i)  $A \cup B$                       (ii)  $A \cap B$                       (iii)  $A - B$                       (iv)  $A \subset B$

**SECTION - IV****5×8 = 40 M****Note: (i) Answer all the Questions.****(ii) Each Question carries 8 Marks.****(iii) Each Question has internal choice.**29.a)  $A = \{x : x \text{ is a Natural number}\}$  $B = \{x : x \text{ is an Even number}\}$  $C = \{x : x \text{ is an Odd number}\}$  $D = \{x : x \text{ is a Prime number}\}$  find

- (i)  $A \cup B$                       (ii)  $B \cap C$                       (iii)  $A - B$                       (iv)  $B - D$

**(OR)**

- b) The following distribution shows the daily pocket allowance of children of a locality. The mean pocket allowance is ₹18. Find the missing frequency 'f'.

Daily pocket allowance (in ₹)	11-13	13-15	15-17	17-19	19-21	21-23	23-25
Number of children	7	6	9	13	f	5	4

30.a) Prove that  $\sqrt{3} + \sqrt{5}$  is an irrational

**(OR)**

b) ABC is a right triangle, right angled at C. Let BC=a, CA=b, AB=c and let p be the length of perpendicular from C on AB. Prove that (i)  $pc=ab$

(ii)  $\frac{1}{p^2} = \frac{1}{a^2} + \frac{1}{b^2}$

31. a) The 4<sup>th</sup> term of a Geometric progression is  $\frac{2}{3}$  and the 7<sup>th</sup> term is  $\frac{16}{81}$ .

Find the Geometric progression.

**(OR)**

b) Find the coordinates of the points of trisection of the line segment joining the points A(2,-2) and B(-7,4)

32.a) A box contain 5 red marbles, 8 white marbles and 4 green marbles. One marble is taken out of the box at random. What is the probability that the marble taken out will be (i) red (ii) white (iii) green (iv) not green

**(OR)**

b) The angle of elevation of a Jet plane from a point A on the ground is  $60^\circ$ . After a flight of 15 seconds, the angle of elevation changes to  $30^\circ$ . If the jet plane is flying at a constant height of  $1500\sqrt{3}$  meter. Find the speed of the jet plane.

33.a) Draw the graph of the polynomial  $p(x) = x^2 - x - 12$  and find zeroes. Justify the answers.

**(OR)**

b) Draw a circle of radius 6cm. Form a point 10 cm away from its centre, construct the pair of tangents of the circle.

**\* \* \* \* ALL THE BEST \* \* \* \***

# MUNICIPAL SCHOOLS

GOVT.OF ANDHRA PRADESH

## PHYSICAL SCIENCE- PAPER –I

---

**CLASS-X**

**Max. Marks: 50**

**Time : 03.15 hr.**

---

**Instructions:**

1. There are four sections and 33 questions in the paper.
  2. Answer should be written in a given answer sheets.
  3. There is internal choice in section-IV.
  4. Write all the questions visible & legibly.
  5. 15 minutes are given for reading the question paper and 2.30 hours given for answering questions
- 

### SECTION-I

**Note: 1. Answer all the questions**

**2. Each question carries  $\frac{1}{2}$  mark**

**$12 \times \frac{1}{2} = 6$  M**

1. Aufbau principle is violated in ?  
 A)  $1s^2 2s^2 2p^6 3s^2$  B)  $1s^2 2s^2 2p^6$   
 C)  $1s^2 2s^2 2p^6 3s^2 3p^6 4s^1$  D)  $1s^2 2s^2 2p^6 3s^2 3p^6 3d^1$
2. Calcium sulphate hemihydrates is called as \_\_\_\_\_
3. L-Shell : 8 :: \_\_\_\_\_ : 32
4. When ice melts, its temperature  
 A) remains constant B) increases  
 C) decreases D) cannot say
5. The splitting of white light into different colours is called \_\_\_\_\_  
 A)scattering of light B) dispersion of light  
 C)reflection of light D)refraction of light
6. Choose the suitable answer of section-B with section-A  

Section-A	Section-B
i) Water	a)2.42
ii)Diamond	b)1.50
	c)1.33
7. Electrons in the outermost orbit are called \_\_\_\_\_
8. P: The head lights of a car connected in series.  
 Q: Household electric appliances are connected in parallel.  
 Which of the following is correct?  
 A) Both P,Q are correct B) Both P,Q are incorrect  
 C) P is correct, Q is incorrect D) P is incorrect, Q is correct

9. Galena is an ore of \_\_\_\_\_  
 A) Zn                      B) Pb                      C) Hg                      D) Al
10. Write the value of the speed of light in vacuum.
11. Number of elements present in period - 2 of the long form of periodic table.  
 A) 2                      B) 8                      C) 18                      D) 32
12. Assertion (A): A person standing on the land appears taller than his actual height to a fish inside a pond  
 Reason (R): Light bends away from the normal as it enters air from water  
 Which of the following is correct?  
 A) Both A and R are true and R is the correct explanation of A  
 B) Both A and R are true and R is not the correct explanation of A  
 C) A is true but R is false  
 D) A is false but R is true

## SECTION-II

**Note: 1. Answer all the questions**

**2. Each question carries 1 mark**

**8 × 1 = 8 M**

13. Why does not distilled water conduct electricity?
14. State Pauli's exclusion principle
15. Ammalu wants make a lens in the class room. Which formula she used to make a lens write it?
16. What happens to the water when wet clothes dry ?
17. Represent Calcium atom using Lewis notation.
18. Write the general configuration of noble gases.
19. Why does stars appear twinkling ?
20. The Doctor Advised to used 2D lens to correct eye defect. What is its focal length?



**SECTION-III****Note: 1. Answer all the questions****2. Each question carries 2 marks****8 × 2 = 16 M**

21. What is thermite process? Mention its applications in daily life?
22. How do you appreciate the working of Ciliary muscles in the eye ?
23. Predict the reasons for low melting point for covalent compounds when compared with ionic compound.
24. A milkman adds a very small amount of baking soda to fresh milk. Why does he shift the  $p^H$  of the milk from 6 to slightly alkaline?
25. Specific heat values of different substances are given under

Substance	Lead	Brass	Copper	Iron	Aluminium
Specific heat (cal/g- °C)	0.031	0.092	0.095	0.115	0.21

- i) Same quantity of water is taken in two vessels made with Copper and Aluminium and same quantity of heat is supplied. In which water gain more heat?
- ii) Write the formula of specific heat?
26. What are the materials required to find the focal length of bi-convex lens in UV method
27. Two bulbs have ratings 100 W, 220V and 60 W, 220 . Which one has the greatest resistance?
28. Define Dobereiner's law of triads? Give one example

**Section-IV****Note: 1. Answer all the questions****2. Each question carries 4 marks****5 × 4 = 20 M**

29. Explain the formation of rainbow

**(OR)**

Explain the formation of mirages?

30. Explain the significance of three Quantum numbers in predicting the positions of an electron in an atom.

**(OR)**

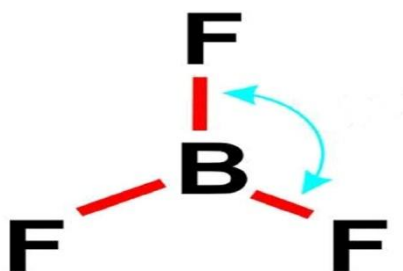
Write short notes on froth floatation process? .

31. Suggest an experiment to prove that the rate of evaporation of a liquid depends on its surface area and vapour already present in surrounding air.

(OR)

State Ohm's law. Suggest an experiment to verify it and explain the procedure.

32. Observe the figure and answer the questions



- What is the hybridization present in  $\text{BF}_3$  ?
- What is the shape of  $\text{BF}_3$ ?
- What is the bond angle present in  $\text{BF}_3$  ?
- What is the name of the molecule?

(OR)

An element has atomic number is 17 Answer the following questions

- What is the valance of the element?
  - Which period and which group the element belongs?
  - What are the number of valence electrons in the element?
  - Is it metal or non-metal?
33. Draw a diagram of arrangement of apparatus for the reaction of acids with metals

(OR)

Draw ray diagrams for the convex lens following positions and explain the nature and position of image.

- Object is placed between  $F_2$  and  $2F_2$
- Object is placed at  $F_2$

\*\*\* ALL THE BEST \*\*\*

# MUNICIPAL SCHOOLS

GOVT.OF ANDHRA PRADESH

## PHYSICAL SCIENCE- PAPER –I

**CLASS-X****Max. Marks: 50****Time : 03.15 hr.****Instructions:**

1. There are four sections and 33 questions in the paper.
2. Answer should be written in a given answer sheets.
3. There is internal choice in section-IV.
4. Write all the questions visible & legibly.
5. 15 minutes are given for reading the question paper and 2.30 hours given for answering questions

**SECTION-I****Note: 1. Answer all the questions****2. Each question carries  $\frac{1}{2}$  mark** **$12 \times \frac{1}{2} = 6$  M**

1. Write the relation between C.G.S unit of heat and S.I unit of heat
2. Complete the following equation  
Acid + Base  $\rightarrow$  Salt + \_\_\_\_\_

3. Choose the suitable answers of Section B with Section A

**Section A****Section B**

1. Formula for Snell's Law
2. At critical angle, the angle of refraction
4. If  $l = 1$  for an atom then the number of orbitals in its sub-shell is \_\_\_\_\_
5. P: Light ray passing along the principal axis is undeviated.  
Q: Light ray passing through the focus is undeviated.  
A) P, Q both are correct  
B) P is correct, Q is incorrect  
C) P is correct, Q is correct  
D) P, Q both are incorrect
6. Which of the following is the most active metal?  
A) Lithium      B) Sodium      C) Potassium      D) Rubidium
7. Which lens is concave?

Lens	Focal length (cm)
A	+20
B	-15

8. Who proposed the electronic theory of valence?

9. Which part of eye helps to change the focal length of eye lens?
10. Which furnace is used for Calculations and Roasting?
11. Joule/ Coulomb is same as  
A) 1-watt                      B) 1-volt                      C) 1-amp                      D) 1-ohm
12. Which of the following molecule doesn't have  $sp^3$  hybridisation  
 $CH_4$ ,  $BF_3$ ,  $NH_3$ ,  $H_2O$

### SECTION-II

**Note: 1. Answer all the questions**

**2. Each question carries 1 mark**

**$8 \times 1 = 8$  M**

13. Madhuri mother stored pickles in a metal vessel. Madhuri told her not to store pickle in a metal vessel. Guess the reason?
14. Refractive index of glass relative to water is  $9/8$ . What is the refractive index of water relative to glass?
15. Out of 3d and 4s, which has more  $(n+l)$  value ? Explain
16. Represent the molecule  $H_2O$  using Lewis notation
17. Why do tungsten is used in filament?
18. Mention two methods which produce very pure metals.
19. What is the role of rods and cones in human eye?.
20. What is a lens ?

### SECTION-III

**Note: 1. Answer all the questions**

**2. Each question carries 2 marks**

**$8 \times 2 = 16$  M**

21. What are the materials required to find the specific heat of solids experimentally ?
22. What are the limitations of Ohm's law.
23. Plaster of Paris should be stored in moisture – proof container. Explain why?

24. An element is an atom has the following set of four quantum numbers

n	$l$	$m_l$	$m_s$
2	0	0	$+1/2$

- i) Name of the element                      ii) Which orbital it belong to
25. What is the reason behind the shining of diamonds and how do you appreciate it ?
26. Why does the sky sometimes appear white?
27. An element has atomic number 19. Where would you expect this element in the periodic table and why?
28. Define the terms                      i) gauge                      ii) flux

#### SECTION-IV

**Note: 1. Answer all the questions**

**2. Each question carries 4 marks**

**5 × 4 = 20 M**

29. Write the differences between evaporation and boiling?

**(OR)**

The focal length of a converging lens is 20cm. An object is 60cm from the lens. Where will the image be formed and what kind of image it?

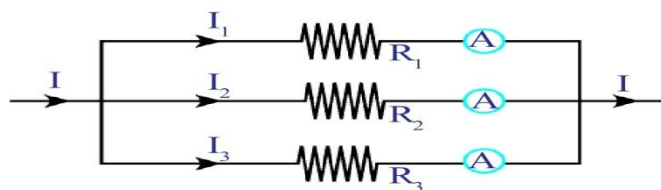
30. Observe the refractive indices of materials and answer the following questions

Material medium	Air	Ice	Water	Kerosene	Benzene	Rock salt	Ruby	Diamond
Refractive index	1.0003	1.31	1.33	1.44	1.50	1.54	1.71	2.42

- a) Write the SI unit of Refractive index
- b) What happens to the speed of light when light is passing from Water to Rock salt
- c) In the table, in which material medium speed of light is less?
- d) Whether the refracted ray bends towards normal or away from the normal when light ray travelled from Water to Kerosene

**(OR)**

Observe the figure and answer the questions



- a) Are all the resistors connected in series or parallel?
  - b) What is the equivalent resistance of the combination of three resistors?
  - c) In this system, which physical quantity is constant?
  - d) If  $R_1 = 2\ \Omega$ ,  $R_2 = 3\ \Omega$  and  $R_3 = 6\ \Omega$ , then find equivalent resistance.
31. Compounds such as alcohols and glucose contain hydrogen but are not categorized as acids. Describe an activity to prove it.

**(OR)**

Suggest an experiment to prove that the presence of air and water are essential for corrosion. Explain the procedure.

32. What is hybridisation? Explain the formation  $\text{BeCl}_2$  molecules using hybridisation

**(OR)**

Define the modern periodic Law. Discuss the construction of the long form of the periodic table.

33. Draw the diagrams showing the eye defect of Myopia and correction with suitable lens

**(OR)**

Draw the Moeller diagram showing the increasing order of  $(n+l)$  values.

**\*\*\* ALL THE BEST \*\*\***

**MUNICIPAL SCHOOLS**

GOVT.OF ANDHRA PRADESH

**General Science-II (Biology)****CLASS-X****Max. Marks: 50****Time : 02.45 hr.****SECTION-1****Note: (1) Answer All questions** **$12 \times \frac{1}{2} = 6 \text{ M}$** **(2) Each question carries  $\frac{1}{2}$  mark**

1. Identify the correct statement
  - (i) Oxygen combines with haemoglobin to form oxy haemoglobin
  - (ii) Haemoglobin has magnesium(A) (i) & (ii) wrong (B) (i) Correct (C) (ii) Correct (D) (i) & (ii) Correct
2. Chemical name of vitamin B<sub>3</sub> is \_\_\_\_\_
3. Find the mistake in following sentence and rewrite it

**Cytokinin helps to closing of Stomata**

4. Identify the given logo



- (A) Reduce                      (B) Recycle                      (C) Reuse                      (D) a and b
5. Arrange the following sentences in order
    - 1) Gaseous exchange at tissue level
    - 2) Breathing
    - 3) Gaseous exchange at lungs level
    - 4) Gas transport by blood
    - 5) Cellular respiration(A) 2-3-5-4-1                      (B) 5-2-3-4-1                      (C) 2-3-4-1-5                      (D) 5-2-4-1-5

6. Identify correct pair
  - (A) Stethoscope - Renelennec
  - (B) valves in blood vessels – Marcello Malpighi
  - (C) blood capillaries – William Harvey
7. \_\_\_\_\_ percentage of cultivable land around the world is irrigated in Drip irrigation method
8. Annelida : Nephridia : : Mollusca : \_\_\_\_\_
9. Latha wants to conduct an experiment to prove oxygen release during Photosynthesis. Which of the following materials required
  - (A) Hydrilla plant, Test tube, Funnel
  - (B) KOH, Transparent bottle, funnel
  - (C) Transparent bottle, funnel, hydrillaplant
  - (D) KOH, Test tube, Funnel
10. He is an English physiologist. He coined the term Hormone. Who is he?
11. Why does the position of right kidney is lower than the left kidney
12. The liquid portion after formation of blood clot is called \_\_\_\_\_

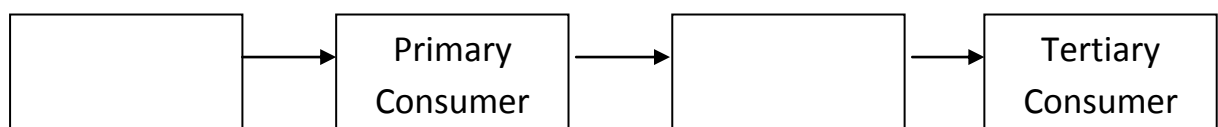
### SECTION-II

**Note: (1) Answer All questions**

**8 × 1 = 8 M**

**(2) Each question carries 1 mark**

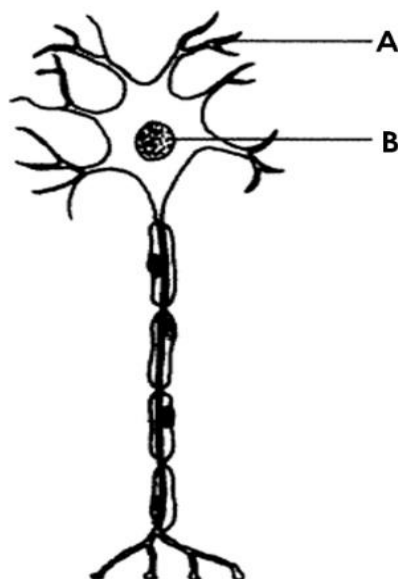
13. What is meant by 'NICHE'
14. Fill the following flow chart of food chain



15. What happens if there is no mitochondria in the cell ?



16. Label the parts A and B in the given diagram



17. If a mother Cell with 46 chromosome divides by meiosis what is the number of Chromosomes in daughter cell
18. What is tissue fluid?
19. What are the parts of malpighian body of nephron?
20. What is meant by parthenogenesis?

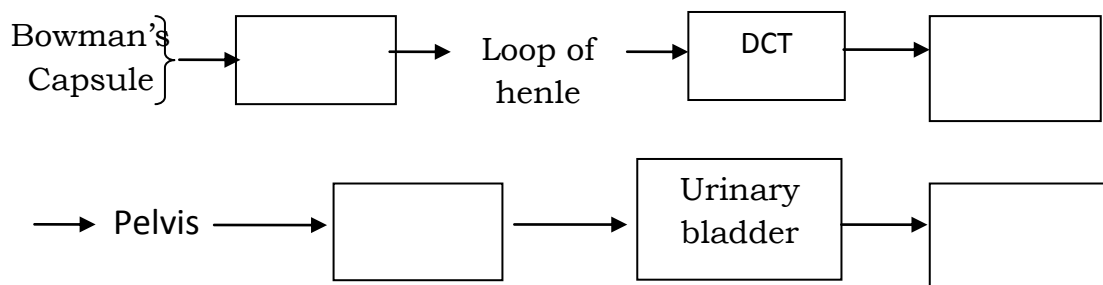
### SECTION – III

**Note: (1) Answer All questions**

**8 × 2 = 16 M**

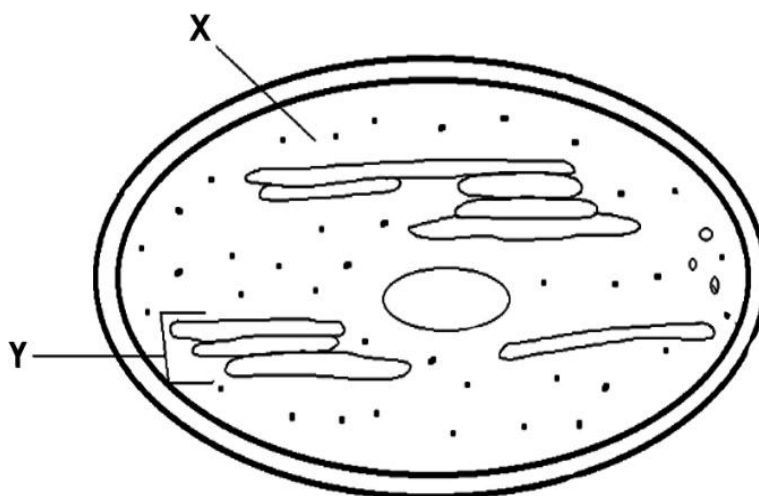
**(2) Each question carries 2 mark**

21. Why did mendal had choosen garden pea for his experiment?
22. Fill up the following flow chart of Transport of urine



23. Write down the functions of medulla oblongata of barin.
24. (A) What is root pressure?
- (B) What are the materials required to conduct an experiment to prove root Pressure?

25. Observe the given diagram and answer the following questions



- (A) label the parts X and Y  
 (B) What is the function of Chloroplast?
26. What methods you suggest to conserve forests?
27. Why do pyramid of biomass is inverted in aquatic ecosystem ?
28. What are the hormones secreted by pituitary gland ?

#### SECTION - IV

**Note: Answer all the questions**

**5 × 4 = 20 M**

**(ii) Each question has internal choice**

**(iii) Each question carries four marks.**

29. (A) Write down the differences between analogous and homologous organs with examples
- (OR)**
- (B) Fossil fuels, soil and biodiversity are non-renewable resources. Write few conservation methods for each.
30. (A) How is using of Toxic material like Chemical pesticides affecting the ecosystem. Write a short note on bioaccumulation and biomagnification
- (OR)**
- (B) Raju got an injury while playing. He observed the blood clots in few minutes. What is the mechanism in clotting of blood explain.

31. Answer the following questions:



- (A) what is the aim of following experiment  
 (B) What is the chemical substance used in this experiment and what its role  
 (C) Why should we destarch leaves before conducting experiment

**(OR)**

- (B) How do you conduct an experiment to prove Heat release during respiration

32. (A) Fill up the given table with required information

Vitamin	Deficiency disease	Symptoms
<b>B<sub>1</sub></b>		
<b>K</b>		
<b>A</b>		
<b>B<sub>3</sub></b>		

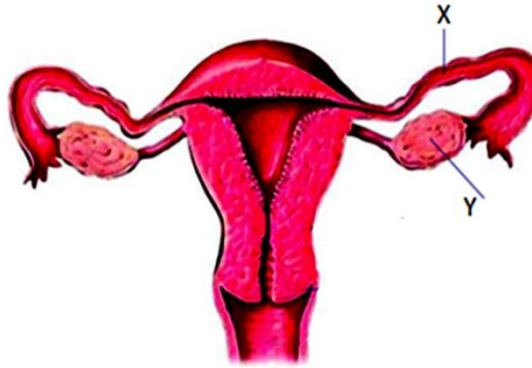
**(OR)**

(B) Observe the given table and answer the following questions

Sl. No	Name of the phyto hormone
1	Cyto kinin
2	gibberelin
3	Auxin
4	Ethylene
5	Abscisic acid

- (i) Which phyto hormone helps to delay age of leaves
- (ii) What are the functions of abscise acid
- (iii) Which is the function of Ethylene
- (iv) What is phyto hormone

33. Observe the given diagram and answer the following questions



- (A) Name the organs marked with X and Y
- (B) What is ovulation?
- (C) What are the four layers present in embryo
- (D) What is the function of amniotic fluid ?

**(OR)**

- (B) Draw a neatly labelled diagram of internal structure of kidney.

**\* \* \* \* ALL THE BEST \* \* \* \***

# MUNICIPAL SCHOOLS

GOVT.OF ANDHRA PRADESH

## General Science- II (Biology)

**CLASS-X****Max. Marks: 50****Time: 02.45 min.**

### SECTION-1

**Note: (1) Answer All questions****2 × ½ = 6 M****(2) Each question carries ½ mark**

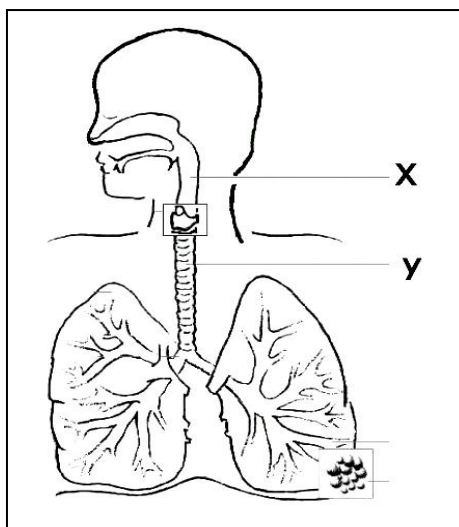
- I am a pigment that can capture sunlight for photosynthesis, who am I ?
- Identify the correct statement
  - Mountain top removal method helps to conserve minerals
  - Contour strip cropping is a good soil conservation method
  - (i) is correct
  - (ii) is correct
  - both (i) & (ii) are correct
  - Both (i) & (ii) are wrong
- Right auriculo-ventricular septum: Tricuspid valve  
Left auriculo- ventricular septum: \_\_\_\_\_
- Ramu has written an incorrect stament. Rewrite the correct statement  
Renette cells are excretory organs in Nematoda organisms.
- Each ATP molecule gives \_\_\_\_\_ calories of energy
- Dutch plantphysiologit discovered first plant hormone Auxin.  
who is he?
- Identity incorrect pair
  - Tripsin - pancriatic juice
  - pepsin - Intestinal juice
  - ptyalin – Saliva
- Write the example for micro irrigation method.
- Read the following flowchart and fill up the blank
 

```

graph LR
    A[Food] --> B[Mouth]
    B --> C[ ]
    C --> D[Pharynx]
          
```
- Which of the following part of brain contain centre for vasomotor activities.
  - Medulla oblangata
  - Diencephalon
  - Mid brain
  - cerebellum
- I carry oxygenated blood from lungs to left auricle of heart. Who am I ?
- Expand ESRD?

**SECTION-II****Note: (i) Answer as the questions****8×1=8 M****(ii) Each question carries****1 Mark**

13. Write any two materials required to conduct lab activity to observe internal structure of kidney.
14. 1000 kg of phytoplankton required to produce 100 kg of zooplankton. Then how much Fish is required to make one kg of human tissue
15. Labell the parts marked with x and y



16. Write any food chain that consist Four Trophic levels.
17. What is meant by root pressure?
18. What is meant by thigmotropism?
19. Define Heridity
20. Write any two plants which propagate new plant through stolons.

**SECTION – III****Note: (i) Answer as the questions****8 × 2=16M****(ii) Each question carries**

21. Conservation of fossil fuels is our responsibility write any four ideas to conserve fossil fuels.
22. Fill up the following checker board of monohybrid experiment and Witte its Genotype ratio

	Y	y
Y		
y		

23. Write difference between Arteries and veins?

24. Observe this table and answer the following.

Gas	% in inhaled air	% in exhaled air
Oxygen	21	16
Carbon dioxide	0.03	4
Nitrogen	78	78

A) Why Carbon dioxide percentage has raised in exhaled air?

B) In the above table why there is no change in nitrogen percentage?

25. What is meant by bio magnification?

26. Read the following table and answer the given questions

Enzyme	Digestive juice	product
Bile	Bile juice	Emulsification of Fats
Ptyalin	Saliva	maltose

(A)What is Emulsification?

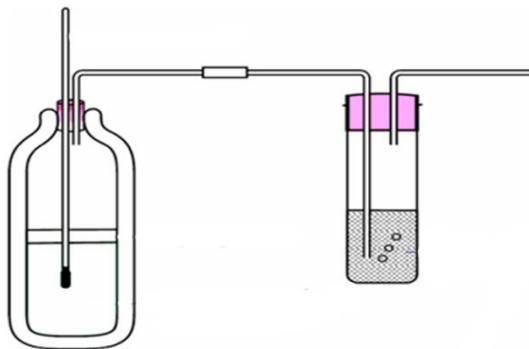
(B) Which nutrient digested by ptyalin.

27. Latha collected alkaloid plants namely opium and snak root. She Wants to know the scientific names and uses of these plants. Write And give information

28. You have conducted an activity holding a falling stick in your Class room to understand Rapidity of responses. Write the procedure in brief.

**SECTION - IV****Note: Answer all the questions****(ii) Each question has internal choice****5 x 4 = 20m****(iii) Each question carries four marks.**

- 29 (A) Observe the given diagram and answer the following questions



- 1) What is the aim of the experiment?
- 2) Why should we use liquid paraffin wax in experiment
- 3) Write the material required to conduct the experiment
- 4) Which is indicator used in experiment to test the presence of oxygen.

**(OR)**

- (B) How do you prove sunlight is necessary for photosynthesis in autotrophs.

- 30 (A) Write down the different biological and effective methods of pest control to reduce usage of chemical pesticides.

**(OR)**

- (B) conservation of environment is important for Sustainable development. what is the role of Reduce, Reuse, Recycle and Recover to save environment. Explain about each method with examples.

- 31 (A) Explain the process of to understand mono hybrid cross of mendal Experiment on pea plants with a checker board

**(OR)**

- (B) write the differences between photo chemical phase and biosynthetie Phase



32. (A) Read the following table and answer the given questions

Sl. No	Name of the hormone
1	Somatorophin
2	Luteinizing hormone
3	Follicle stimulating hormone
4	Testosterone
5	Adrenalin
6	Oestrogen

- (i) What are the hormones released by pituitary gland
- (ii) Which hormone responsible for secretion of Testosterone
- (iii) What are the functions of Adrenalin?

**(OR)**

(B) Read the following table and answer the given questions

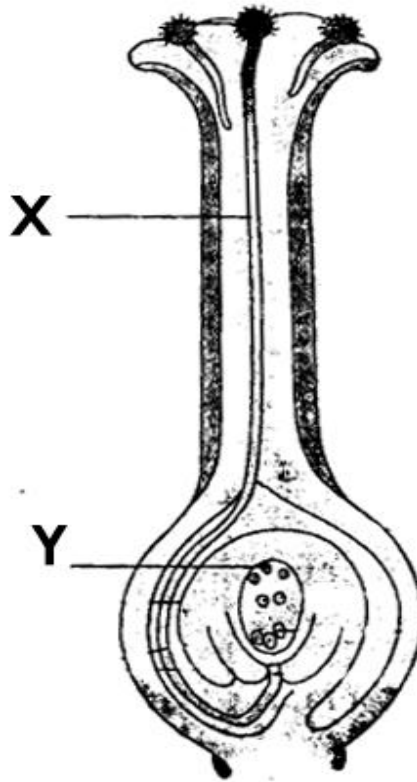
Name of the secondary metabolites	uses
Tannis	Tanning
Latex	Rubber, bio-diesel
Resin	Varnish
Gums	Medicine, food

- (i) Write any two plant which produce gums
- (ii) What is the scientific name of rubber plant
- (iii) Which part of Jetropha plant is used to produce Bio - diesel
- (iv) what is meant by secondary metabolites

- 33 (A) Draw a neatly labelled diagram of ' Internal structure of heart'

(OR)

- (B) Observe the given diagram and answer the following questions



1. Name the x and y
2. what is meant by double fertilization
3. Which part of carpel develop into seed after fertilization
4. What are the parts of embryo.

\* \* \* \* ALL THE BEST \* \* \* \*

# MUNICIPAL SCHOOLS

GOVT.OF ANDHRA PRADESH

## SOCIAL STUDIES

---

**CLASS-X**

**Max. Marks: 100**

**Time : 03.15 hr.**

---

**Instructions:**

1. 15 minutes of time is allotted for reading the question paper in addition to 3.00 hours for writing the answers.
  2. All the answers should be written in the separate answer booklet.
  3. There are four sections in the question paper.
  4. There is internal choice in Section IV.
  5. In the question No. 33, Both A & B (India map and world map) should be answered separately.
- 

**SECTION - I**

**12 × 1 = 12 M**

**Note:**     **1. Answer all the questions.**

**2. Each question carries 1 mark**

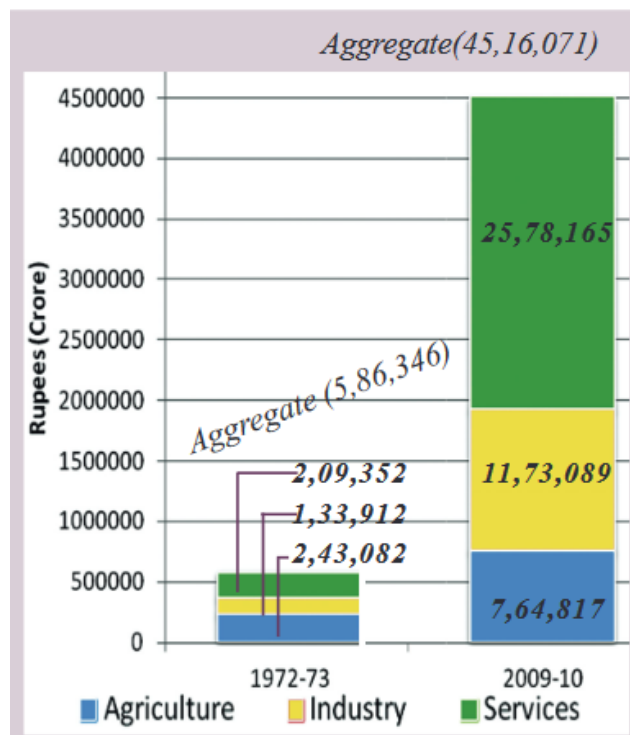
1. Expand G.M.T.
2. Find the mismatched
  - New Delhi           -     28.6° N
  - Leh                   -     24.08° N
  - Chennai            -     13.1° N
3. The Ganga has twin sources. The main one is the Gangotri glacier. The other one is \_\_\_\_\_
4. Based on the relationship between the items in the first pair, fill up the blank in the second pair.  
Medicines : Ranbaxy    : :    Nuts and bolts : .....
5. Match the following
 

i) Resignation of Congress Ministries	(    )	a) 1939
ii) Formation of Muslim League	(    )	b) 1942
iii) Cripps Mission	(    )	c) 1906
6. National Food Security Act was made in the year ..... (Fill up the blank)
7. How many members were there in the Constituent Assembly of India after partition of the country?

8. Which of the following statement is incorrect?
- A) State Regorganisation Commission was appointed in 1956
- B) Fazl Ali, K.M.Panikkar, Hridaynath Kunzru were the members of State Reorganisation Commission.
- C) 14 states and 6 union territories were created according the State Reorganisation Act.
9. Who was the first Non Congress Prime Minister of India?
10. Name the person in the below picture.

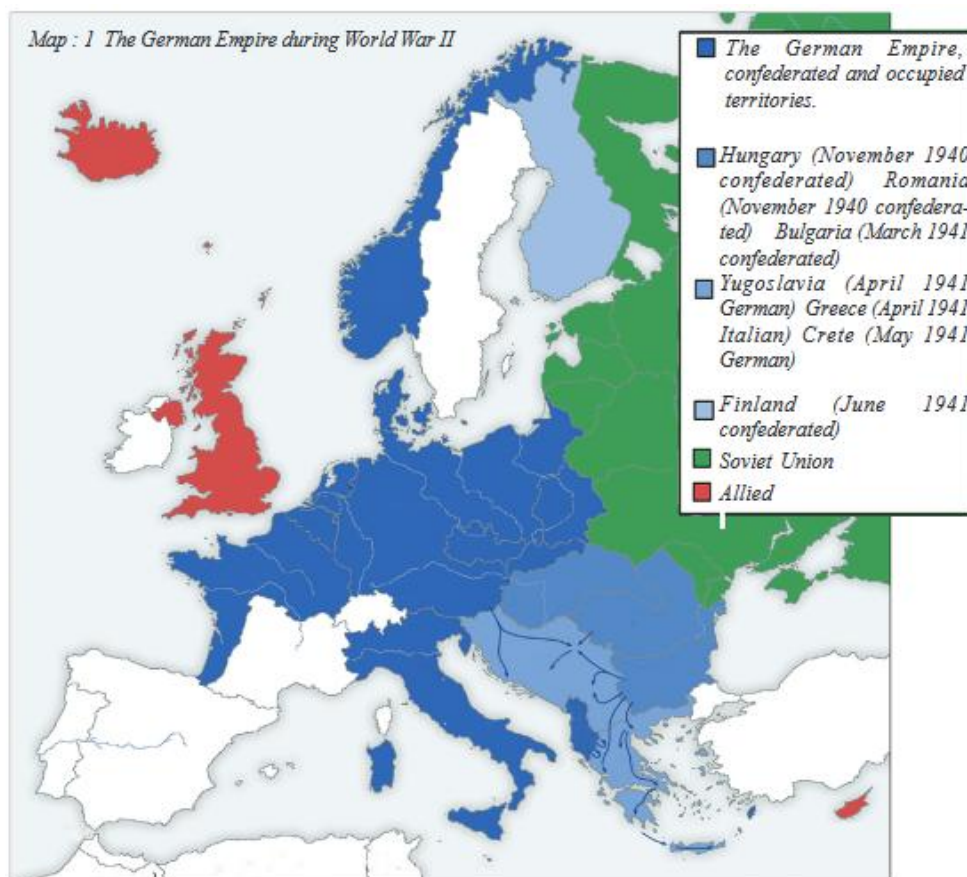


11. Observe the below graph and answer the question.



**Question:- How much was GDP in the year 2009-10?**

12. Name any two countries occupied by Germany during World War-II.



## SECTION – II

**Note:** 1. Answer all questions.

2. Each question carries 2 Mark.

8 × 2 = 16 M

13. How many categories does the Census of India group the working population into? What are they?
14. When was Triple Entente formed? Who were the members of it?
15. Write any two effects of Great Depression.
16. We notice that the number of females in India has consistently been lower than that of men. This female/ male ratio, the 'sex ratio' is a cause of concern since it indicates a hidden form of discrimination.  
Question:- Do you think discrimination affects sex ratio? Write your opinion.

17. Draw a bar graph using the data given in the below table.

Table : 3 Per Capita Income per annum of Select States	
State	Per Capita Income for 2012 (in rupees)
Punjab	78,000
Himachal Pradesh	74,000
Bihar	25,000

18. How does deforestation affect global warming?

19. Observe the map and answer the questions.



Map 1 : A graphic representation of various regions in the southern peninsula before State reorganisation.

(i) In which state is the Coorg now?

(ii) When was Andhra State formed?

20. Make a pamphlet on the uses of “coarse cereals”.

### SECTION – III

**Note: 1. Answer all questions.**

**2. Each question carries 4 Marks.**

**8 x 4 = 32**

21. Plateau regions in India do not support agriculture as much as the plain regions. What are the reasons for this?

22. What main criterion is used by the World Bank in classifying different countries? What are the limitations of the above criterion, if any?



23. How did the idea of nation states and nationalism influence desire for war during World Wars?
24. What are the provisions laid in the constitution to facilitate social change?
25. Answer the following questions based on the information given in this table.

1917 March 8	Women took out a procession in St. Petersburg
1917 March 2	Tsar abdicated the power in Russia
1917 March 12	February Revolution took place in Russia
1917 October 24	Bolshevik uprising in Petrograd
1917 November 7	October Revolution took place in Russia
1918 February 1	Russia followed the Julian calendar until February 1918.

- (i) Why did women take out a procession in St. Petersburg?
- (ii) Who was the Tsar who abdicated the power?
- (iii) What calendar did Russia follow until 1 February 1918?
- (iv) When did Bolsheviks revolt against the provisional government?
26. Observe the map and answer the following questions.



**Map 2 : Ganga joining with Brahmaputra**

- (i) What are the two tributaries that join the river Brahmaputra?
- (ii) Write any two tributaries of the river Yamuna.
- (iii) What is called Brahmaputra in Tibet?
- (iv) Name any two states through which the river Ganga flows.

27. Write a para appreciating the efforts taken for water conservation in Hiware Bazar.
28. What qualities of V.P.Sing do you appreciate?

**SECTION - IV****5 × 8 = 40 M**

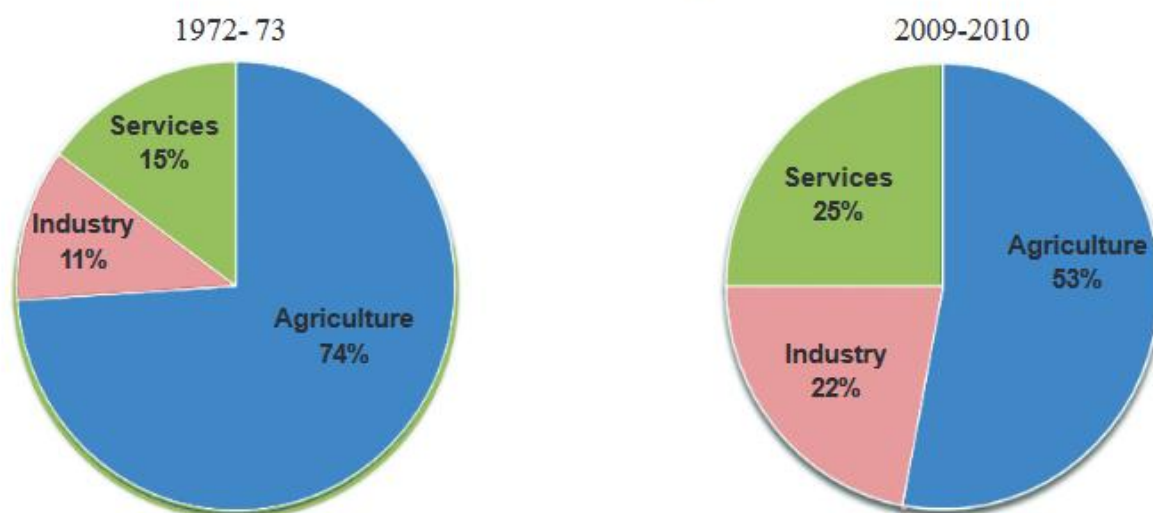
**Note:**     **1. Answer all the questions.**  
               **2. Each question carries 8 marks.**

29. Describe the Indo-Gangetic Plain.

**(OR)**

Compare different points of view about Great Depression, which one would you agree with?

30. Observe the below pie charts and answer the questions.

*Graph 3 : Sectoral shares of employment*

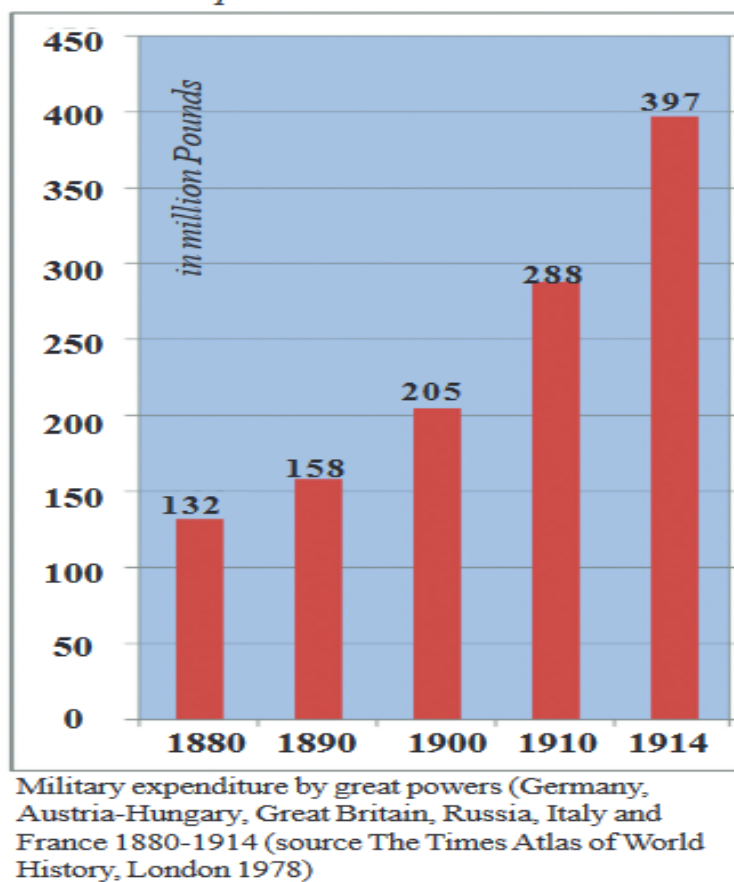
- (a) Look at the above pie charts and make a table
- (b) (i) Why is the share of agriculture sector declined from 1972-73 to 2009-2010?
- (ii) Which sector's share is doubled from 1972-73 to 2009-2010?
- (iii) How many percentage of workers were engaged in both Service and industrial sectors during 2009-2010?
- (iv) What is the share of employment of service sector during 1972- 73?



(OR)

Observe the below graph and answer the questions..

*Graph 2 : The Armaments Race*



- (a) Look at the above graph and make a table
  - (b) (i) How many times did the military expenditure increase from 1880 to 1914?
  - (ii) How much amount was expended on the military in the year 1890?
  - (iii) What are the great powers whose military expenditure led to the armaments race?
  - (iv) What would be the effect of the armaments race in your opinion?
31. "The climate of India is strongly influenced by the monsoon winds. The sailors who came to India during olden days noticed the regular periodic reversal of winds. They used these winds to sail towards the Indian coast. Arab traders named this seasonal reversal of wind system 'monsoon'."

**Question:- Comment on the influence of the monsoon winds on India.**

(OR)

“By 1941 Japan had begun expanding into South East Asia and there was clear threat to Indian territories as well. The British had to get Indian people to back the war against Japan etc..

**Q) What did the British do to get the support of Indian people and what were the consequences of it?**

32. How does the globalisation affect India?

**(OR)**

What are the different roles done by United Nations in order to build peace in the world?

33. Locate the following on India map.

- 1) The river Krishna
- 2) The mountains that form north edge of Deccan Plateau
- 3) Indira Point
- 4) The state in which the river Ganga originates

**(OR)**

- 5) Delhi
- 6) The islands formed due to the coral reefs
- 7) The river Mahanadi
- 8) The state in which the Sun rises first

**AND**

**Locate the following on World map.**

- 1) Moscow
- 2) The country that was defeated in the Battle of Stalingrad
- 3) Ukraine
- 4) The sea that separates Europe and Africa

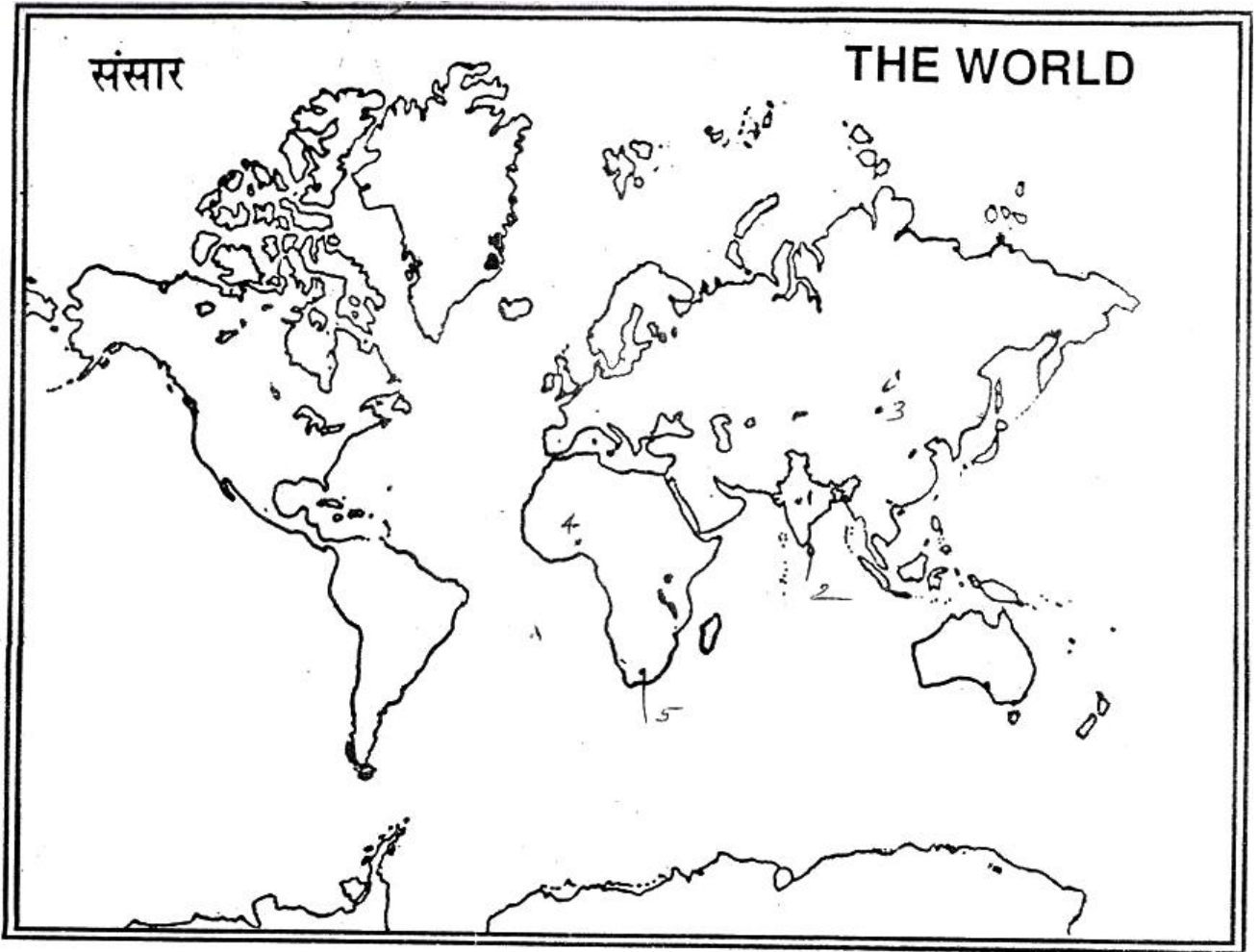
**(OR)**

- 5) New York
- 6) The largest country that located in both Europe and Asia
- 7) Rome
- 8) The country on which Germany invaded on 1 September 1939

**\* \* \* \* ALL THE BEST \* \* \* \***

MAP OF INDIA





# MUNICIPAL SCHOOLS

GOVT.OF ANDHRA PRADESH

## SOCIAL STUDIES

---

**CLASS-X**

**Max. Marks: 100**

**Time : 03.15 hr.**

---

**Instructions:**

1. 15 minutes of time is allotted for reading the question paper in addition to 3.00 hours for writing the answers.
  2. All the answers should be written in the separate answer booklet.
  3. There are four sections in the question paper.
  4. There is internal choice in Section IV.
  5. In the question No. 33, Both A & B (India map and world map) should be answered separately.
- 

**SECTION - I**

**12 × 1 = 12 M**

**Note:**     **1. Answer all the questions.**

**2. Each question carries 1 mark**

1. Expand I.M.R.
2. Find the correctly matched
 

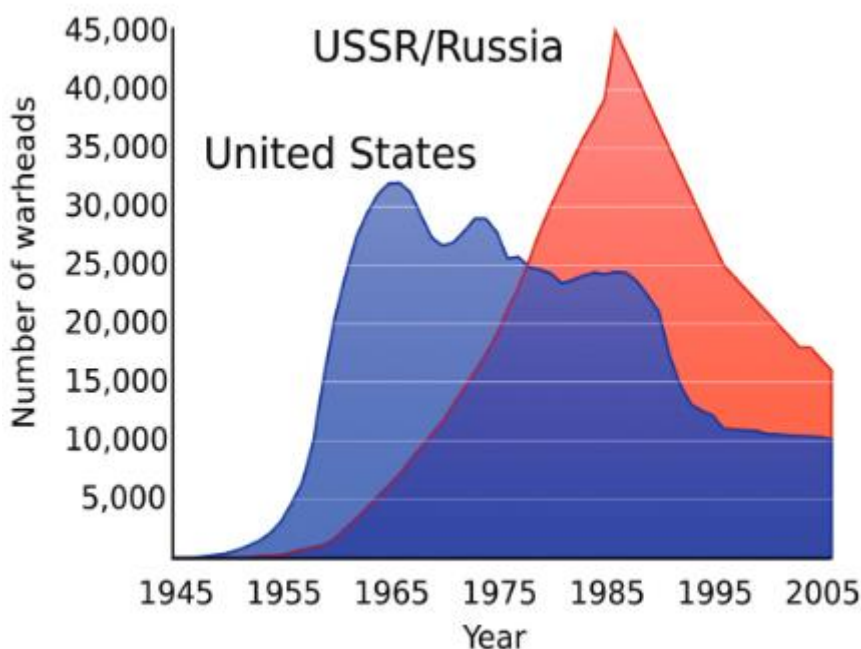
A. Agriculture Sector	-	Mining
B. Industrial Sector	-	Milk Vendor
C. Service Sector	-	Potter
3. Find the odd one out  
Indira Gandhi; NeelamSanjeeva Reddy; Morarji Desai; V.P.Singh
4. Based on the relationship between the items in the first pair, fill up the blank in the second pair.  
Brahmaputra : Himalayan River : : Godavari : .....
5. Match the following
 

State	Sex Ratio
i) Haryana	(    )    a) 1000 : 1034
ii) Kerala	(    )    b) 1000 : 993
iii) Andhra Pradesh	(    )    c) 1000 : 879
6. Recommended food intake of per day in Urban areas .....  
Kilocalories(Fill up the blank)
7. Who coined the name Pakistan?

8. Which of the following statement is correct?
- A. Amending the articles of the Constitution can be initiated by either Parliament or any State Assembly
  - B. Constitutional Amendment Bill need not be approved by the President of India.
  - C. Certain basic principles of the Constitution cannot be amended.
9. How many percentage of seats in Lok Sabha won by Indian National Congress Party in first three general elections?
10. Which organization does the following emblem belong to?



11. Observe the below graph and answer the question.

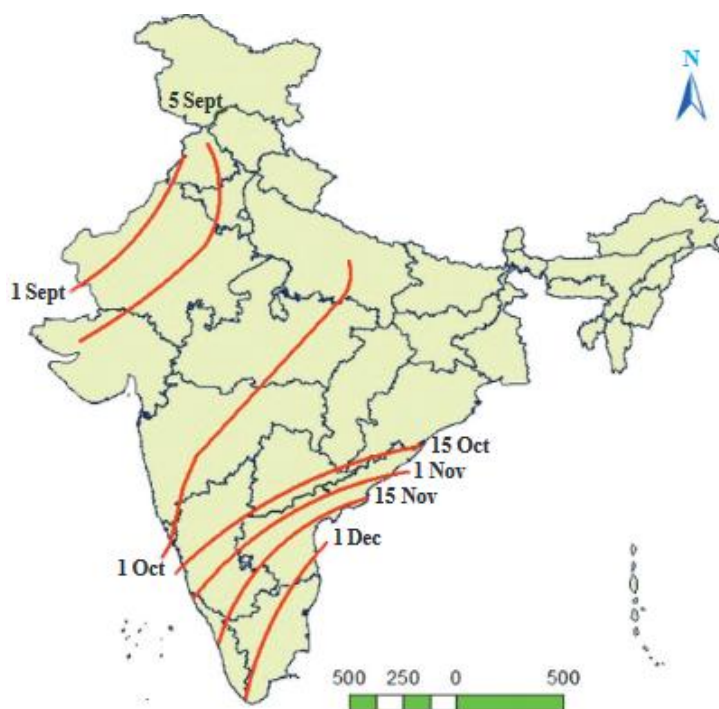


*Graph 1 : US and USSR nuclear stockpiles*

**Question:-What does the above graph show?**

12. Observe the below map and answer the question.

*Map 4 : India - Withdrawal of south-west monsoon*



**Question:- From which month do south-west monsoons withdraw from Punjab?**

### SECTION – II

**Note: 1. Answer all questions.**

**2. Each question carries 2 Mark.**

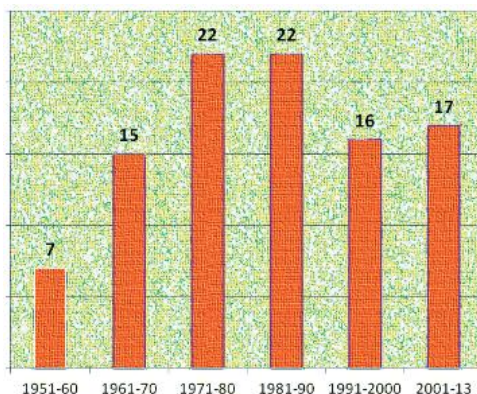
**8 × 2 = 16 M**

13. Differentiate between IST and GMT?
14. What were the territorial penalties imposed on Germany in the Treaty of Versailles?
15. Who were the Indian who were inspired by the experience of USSR and what aspects of communism did they not agree?
16. The above evidence indicates that not everyone has benefited from globalisation. People with education, skill and wealth have made the best use of the new opportunities. On the other hand, there are many people who have not shared the benefits.

**Question:-** Read the above para and comment it.

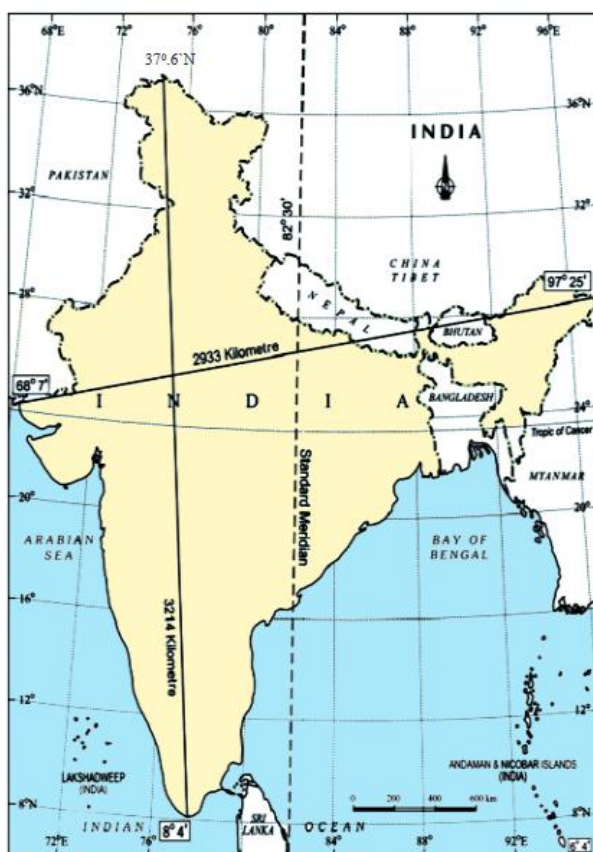


17. Observe the graph and answer the questions.



Graph 1 : Since the Constitution was adopted on 26th January 1950 till 2013 nearly 99 amendments were made.

- i) How many articles were there in the draft constitution?
  - ii) How many times the constitution was amended till 2013?
18. Why should ground water be considered a common pool resource?
19. Observe the map and answer the questions.



- (i) What is the northernmost latitude of India?
  - (ii) Name any one state through which Tropic of Cancer passes?
20. Write a small para appreciating Subhash Chandra Bose.



## SECTION – III

**Note: 1. Answer all questions.**

**2. Each question carries 4 Marks.**

**8 × 4 = 32 M**

21. Describe the relationship between increase in food production and food security.
22. Distinguish between population growth and population change.
23. What are the silent features of the 42nd Amendment?
24. Write about the “Collective Farms”.
25. Draw a bar graph based on the information given in this table.

Table : 4 Some Comparative data of Select States			
State	IMR per 1000 (2006)	Literacy rate (%) (2011)	Net Attendance Rate (2006)
Punjab	42	77	76
Himachal Pradesh	36	84	90
Bihar	62	64	56

26. Observe the map and answer the following questions.



- (i) What side did Japan fight on in the Second World War?
  - (ii) Write any two countries that were under Japanese control in 1942.
  - (iii) What is the current name of Burma?
  - (iv) Which continent did much of the area under Japanese control belong to?
27. Make a pamphlet on the need of peace.
28. Write a letter explaining the role of public facilities in development?

**SECTION - IV****5 × 8 = 40 M****Note: 1. Answer all the questions.****2. Each question carries 8 marks.**

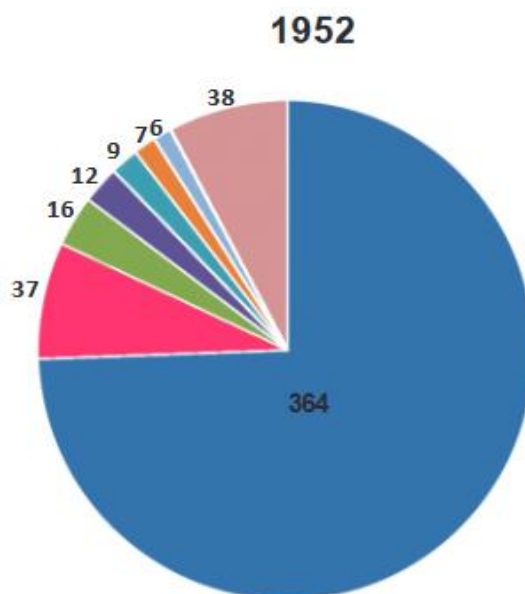
29. Describe India's climate controls.

**(OR)**

Make a list of various reasons for the Partition of the country

30. Observe the below pie charts and answer the questions.

*Graph 1 : Seat Share of various political parties in 1952*



*Index of Political Parties (only those with more than 5 seats)*

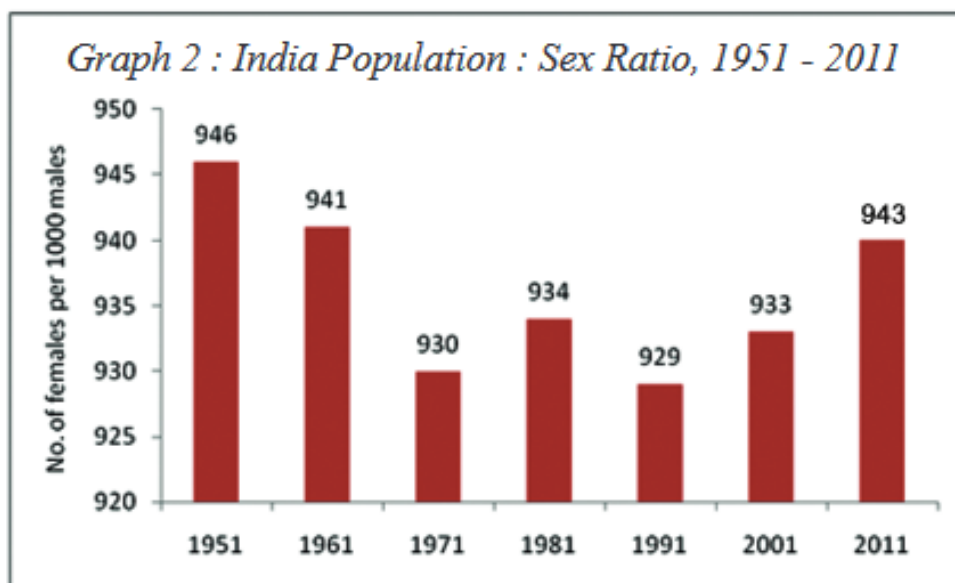


- (a) Look at the above pie chart and make a table
- (b) (i) What party formed the government in 1952?

- (ii) How many seats were there in the First Lok Sabha?
- (iii) Which party was the second largest party in the First Lok Sabha?
- (iv) How many independents were elected for the Lok Sabha in 1952?

(OR)

Observe the below graph and answer the questions..



- (a) Look at the above graph and make a table
  - (b) (i) What is sex ratio?
  - (ii) What would be the reason for highest sex ratio in 1951?
  - (iii) What is the sex ratio in 2011?
  - (iv) In which year the sex ratio is least?
- 31.** Identify and list arguments that would support or oppose use of groundwater in various contexts, such as agriculture, industry etc.

(OR)

The First World War broke out in 1914 – it was truly a World War as virtually no country was left untouched by it from Japan and China in the East to the US in the West. It ended in the defeat of Germany and its allies and in the victory of Britain and France in 1918. The conditions of peace that followed only created the seeds of another and more deadly war from 1939 to 1945

**Q)** The conditions of peace that followed only created the seeds of another and more deadly war from 1939 to 1945. Explain it.

32. What are the provisions of the National Food Security Act?

**(OR)**

By the end of the 20th century there is only one single power that dominates the world. In this context what do you think would be the role of NAM?

**33. Locate the following on India map.**

- 1) The river Ganga
- 2) The Plateau which is rich in minerals
- 3) The Vindhya Ranges
- 4) The state in which Chilka lake is located

**(OR)**

- 5) Shimla
- 6) The city in which National Institute of Nutrition is located
- 7) The Nilgiri hills
- 8) The southernmost tip of peninsular plateau

**AND**

**Locate the following on World map.**

- 1) Paris
- 2) The country in which Atom Bombs were dropped
- 3) Portugal
- 4) The country which Woodrow Wilson belongs to

**(OR)**

- 5) St. Peters Berg
- 6) The Country which was greatly affected by Great Depression
- 7) China
- 8) The country which colonized India

**\* \* \* \* ALL THE BEST \* \* \* \***

MAP OF INDIA



